

TLE4 Polyclonal Antibody

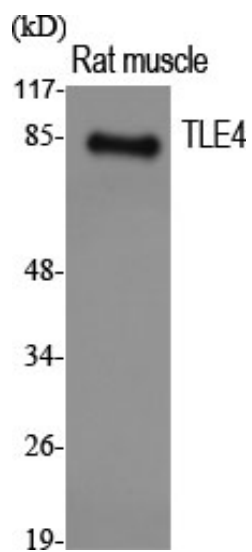
Catalog_no :	AT4671
Applications :	WB,IHC-p,ELISA
Reactivity :	Human,Mouse,Rat
Category :	抗原抗体
Size :	100µg/50µg/20µg
Gene_name :	TLE4
Protein_name :	Transducin-like enhancer protein 4
Humangene_id :	7091
Humanswissprot_no :	Q04727
Mousegene_id :	21888
Mouseswissprot_no :	Q62441
Ratgene_id :	25565
Ratswissprot_no :	Q07141
Immunogen :	The antiserum was produced against synthesized peptide derived from human TLE4. AA range:161-210
Specificity :	TLE4 Polyclonal Antibody detects endogenous levels of TLE4 protein.
Formulation :	Liquid in PBS containing 50% glycerol, 0.5% BSA and 0.02% sodium azide.
Source :	Rabbit
Dilution :	Western Blot: 1/500 - 1/2000. Immunohistochemistry: 1/100 - 1/300. ELISA: 1/20000. Not yet tested in other applications.
Purification :	The antibody was affinity-purified from rabbit antiserum by affinity-chromatography using epitope-specific immunogen.
Concentration :	1 mg/ml
Storage_stability :	-20°C/1 year
Msds :	MSDS_Antibody.pdf



Other_name : TLE4; KIAA1261; Transducin-like enhancer protein 4

Molecular Weight : 83KD

Product Images



Western Blot analysis of various cells using TLE4 Polyclonal Antibody. Secondary antibody was diluted at 1:20000 cells nucleus extracted by Minute TM Cytoplasmic and Nuclear Fractionation kit (SC-003, Invent biotech, MN, USA).