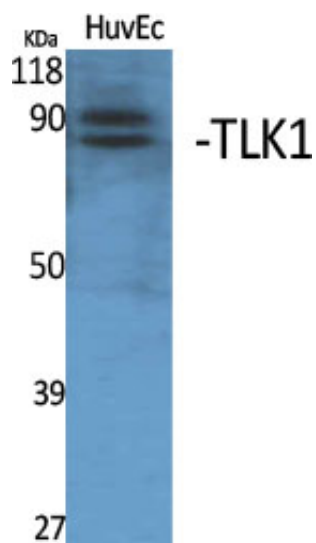


## TLK1 Polyclonal Antibody

Catalog_no :	AT4672
Applications :	WB,ELISA
Reactivity :	Human
Category :	抗原抗体
Size :	100µg/50µg/20µg
Gene_name :	TLK1
Protein_name :	Serine/threonine-protein kinase tousled-like 1
Humangene_id :	<a href="#">9874</a>
Humanswissprot_no :	<a href="#">Q9UKI8</a>
Immunogen :	The antiserum was produced against synthesized peptide derived from human TLK1. AA range:201-250
Specificity :	TLK1 Polyclonal Antibody detects endogenous levels of TLK1 protein.
Formulation :	Liquid in PBS containing 50% glycerol, 0.5% BSA and 0.02% sodium azide.
Source :	Rabbit
Dilution :	Western Blot: 1/500 - 1/2000. ELISA: 1/40000. Not yet tested in other applications.
Purification :	The antibody was affinity-purified from rabbit antiserum by affinity-chromatography using epitope-specific immunogen.
Concentration :	1 mg/ml
Storage_stability :	-20°C/1 year
Msds :	MSDS_Antibody.pdf
Other_name :	TLK1; KIAA0137; Serine/threonine-protein kinase tousled-like 1; PKU-beta; Tousled-like kinase 1
Molecular Weight :	87KD

## Product Images



Western Blot analysis of various cells using TLK1 Polyclonal Antibody. Secondary antibody was diluted at 1:20000