

## TMC8 Polyclonal Antibody

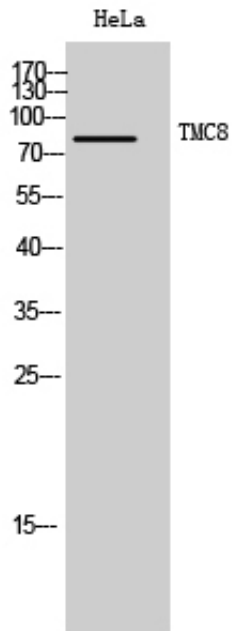
Catalog_no :	AT4676
Applications :	WB,IHC-p,ELISA
Reactivity :	Human,Mouse,Rat
Category :	抗原抗体
Size :	100µg/50µg/20µg
Gene_name :	TMC8
Protein_name :	Transmembrane channel-like protein 8
Humangene_id :	<a href="#">147138</a>
Humanswissprot_no :	<a href="#">Q8IU68</a>
Mousegene_id :	<a href="#">217356</a>
Mouseswissprot_no :	<a href="#">Q7TN58</a>
Immunogen :	The antiserum was produced against synthesized peptide derived from human TMC8. AA range:601-650
Specificity :	TMC8 Polyclonal Antibody detects endogenous levels of TMC8 protein.
Formulation :	Liquid in PBS containing 50% glycerol, 0.5% BSA and 0.02% sodium azide.
Source :	Rabbit
Dilution :	Western Blot: 1/500 - 1/2000. Immunohistochemistry: 1/100 - 1/300. ELISA: 1/5000. Not yet tested in other applications.
Purification :	The antibody was affinity-purified from rabbit antiserum by affinity-chromatography using epitope-specific immunogen.
Concentration :	1 mg/ml
Storage_stability :	-20°C/1 year
Msds :	<a href="#">MSDS_Antibody.pdf</a>
Other_name :	TMC8; EVER2; EVIN2; Transmembrane channel-like protein 8; Epidermodysplasia verruciformis protein 2
Molecular	81KD



Weight :

---

## Product Images



Western Blot analysis of HeLa cells using TMC8 Polyclonal Antibody. Secondary antibody was diluted at 1:20000