



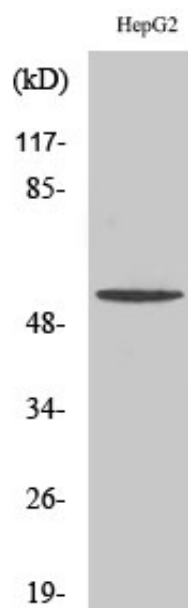
TMEM145 Polyclonal Antibody

Catalog_no :	AT4678
Applications :	WB,IHC-p,IF,ELISA
Reactivity :	Human,Mouse
Category :	抗原抗体
Size :	100µg/50µg/20µg
Gene_name :	TMEM145
Protein_name :	Transmembrane protein 145
Humangene_id :	284339
Humanswissprot_no :	Q8NBT3
Mousegene_id :	330485
Mouseswissprot_no :	Q8C4U2
Immunogen :	The antiserum was produced against synthesized peptide derived from human TMEM145. AA range:58-107
Specificity :	TMEM145 Polyclonal Antibody detects endogenous levels of TMEM145 protein.
Formulation :	Liquid in PBS containing 50% glycerol, 0.5% BSA and 0.02% sodium azide.
Source :	Rabbit
Dilution :	Western Blot: 1/500 - 1/2000. Immunohistochemistry: 1/100 - 1/300. Immunofluorescence: 1/200 - 1/1000. ELISA: 1/10000. Not yet tested in other applications.
Purification :	The antibody was affinity-purified from rabbit antiserum by affinity-chromatography using epitope-specific immunogen.
Concentration :	1 mg/ml
Storage_stability :	-20°C/1 year
Msds :	MSDS_Antibody.pdf
Other_name :	TMEM145; Transmembrane protein 145
Molecular	56KD



Weight :

Product Images



Western Blot analysis of various cells using TMEM145 Polyclonal Antibody. Secondary antibody was diluted at 1:20000