

TMPRSS3 Polyclonal Antibody

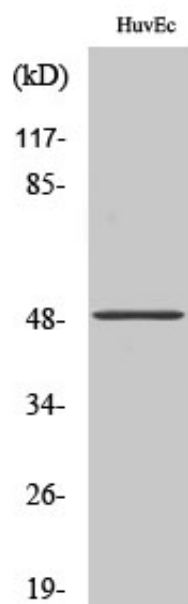
Catalog_no :	AT4682
Applications :	WB,IHC-p,IF,ELISA
Reactivity :	Human,Mouse
Category :	抗原抗体
Size :	100µg/50µg/20µg
Gene_name :	TMPRSS3
Protein_name :	Transmembrane protease serine 3
Humangene_id :	64699
Humanswissprot_no :	P57727
Mousegene_id :	140765
Mouseswissprot_no :	Q8K1T0
Immunogen :	The antiserum was produced against synthesized peptide derived from human TMPRSS3. AA range:405-454
Specificity :	TMPRSS3 Polyclonal Antibody detects endogenous levels of TMPRSS3 protein.
Formulation :	Liquid in PBS containing 50% glycerol, 0.5% BSA and 0.02% sodium azide.
Source :	Rabbit
Dilution :	Western Blot: 1/500 - 1/2000. Immunohistochemistry: 1/100 - 1/300. Immunofluorescence: 1/200 - 1/1000. ELISA: 1/10000. Not yet tested in other applications.
Purification :	The antibody was affinity-purified from rabbit antiserum by affinity-chromatography using epitope-specific immunogen.
Concentration :	1 mg/ml
Storage_stability :	-20°C/1 year
Msds :	MSDS_Antibody.pdf
Other_name :	TMPRSS3; ECHOS1; TADG12; Transmembrane protease serine 3; Serine protease TADG-12; Tumor-associated differentially-expressed gene 12 protein



Molecular
Weight :

49KD

Product Images



Western Blot analysis of various cells using TMPRSS3 Polyclonal Antibody. Secondary antibody was diluted at 1:20000