

TNF-R1 Polyclonal Antibody

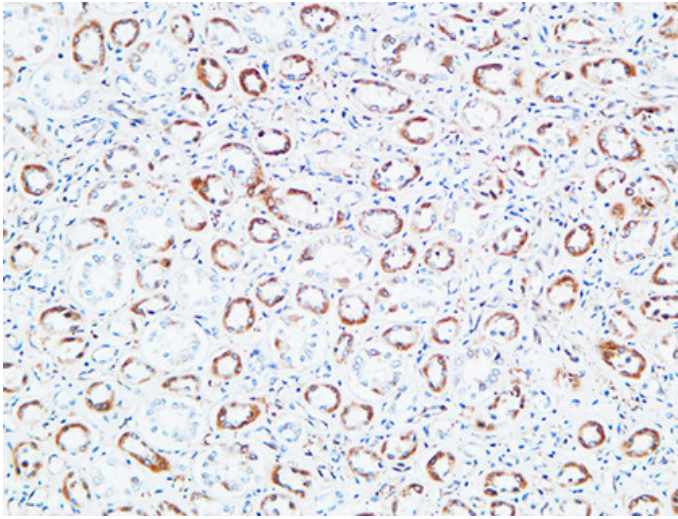
Catalog_no :	<u>AT4687</u>
Applications :	<u>IHC-p,WB,ELISA</u>
Reactivity :	<u>Human,Mouse,Rat</u>
Category :	<u>抗原抗体</u>
Size :	<u>100µg/50µg/20µg</u>
Gene_name :	<u>TNFRSF1A</u>
Protein_name :	<u>Tumor necrosis factor receptor superfamily member 1A</u>
Humangene_id :	<u>7132</u>
Humanswissprot_no :	<u>P19438</u>
Mousegene_id :	<u>21937</u>
Mouseswissprot_no :	<u>P25118</u>
Ratgene_id :	<u>25625</u>
Ratswissprot_no :	<u>P22934</u>
Immunogen :	<u>The antiserum was produced against synthesized peptide derived from human TNF Receptor I. AA range:381-430</u>
Specificity :	<u>TNF-R1 Polyclonal Antibody detects endogenous levels of TNF-R1 protein.</u>
Formulation :	<u>Liquid in PBS containing 50% glycerol, 0.5% BSA and 0.02% sodium azide.</u>
Source :	<u>Rabbit</u>
Dilution :	<u>WB 1:500-2000 Immunohistochemistry: 1/100 - 1/300. ELISA: 1/20000. Not yet tested in other applications.</u>
Purification :	<u>The antibody was affinity-purified from rabbit antiserum by affinity-chromatography using epitope-specific immunogen.</u>
Concentration :	<u>1 mg/ml</u>
Storage_stability :	<u>-20°C/1 year</u>
Msds :	<u>MSDS_Antibody.pdf</u>



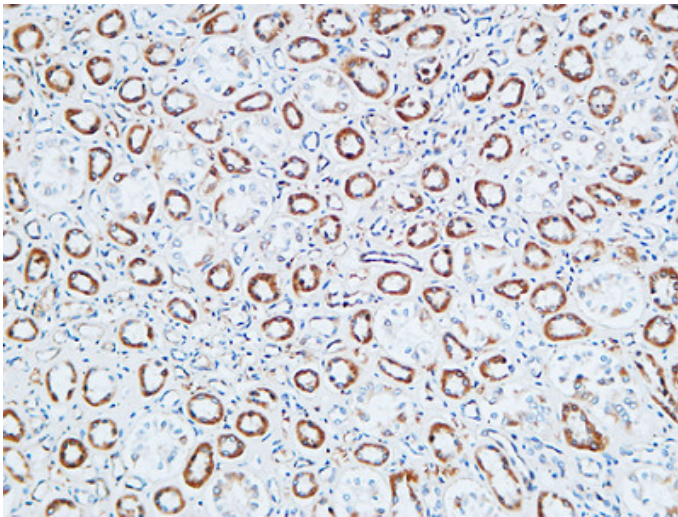
Other_name : TNFRSF1A; TNFAR; TNFR1; Tumor necrosis factor receptor superfamily member 1A; Tumor necrosis factor receptor 1; TNF-R1; Tumor necrosis factor receptor type I; TNF-RI; TNFR-I; p55; p60; CD antigen CD120a

Molecular Weight : 50KD

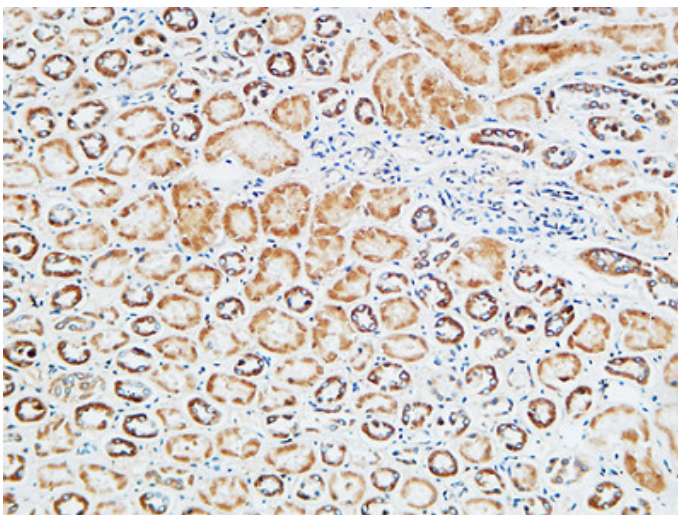
Product Images



Immunohistochemical analysis of paraffin-embedded Human kidney. 1, Antibody was diluted at 1:200(4°,overnight). 2, High-pressure and temperature EDTA, pH8.0 was used for antigen retrieval. 3,Secondary antibody was diluted at 1:200(room temperature, 30min).



Immunohistochemical analysis of paraffin-embedded Human kidney. 1, Antibody was diluted at 1:200(4°,overnight). 2, High-pressure and temperature EDTA, pH8.0 was used for antigen retrieval. 3,Secondary antibody was diluted at 1:200(room temperature, 30min).



Immunohistochemical analysis of paraffin-embedded Human kidney. 1, Antibody was diluted at 1:200(4°,overnight). 2, High-pressure and temperature EDTA, pH8.0 was used for antigen retrieval. 3,Secondary antibody was diluted at 1:200(room temperature, 30min).