



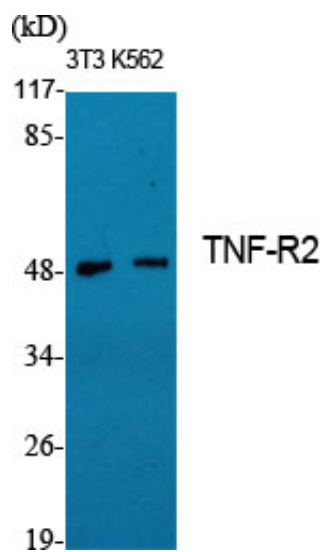
TNF-R2 Polyclonal Antibody

Catalog_no :	AT4688
Applications :	WB,IHC-p,IF,ELISA
Reactivity :	Human,Mouse,Rat
Category :	抗原抗体
Size :	100µg/50µg/20µg
Gene_name :	TNFRSF1B
Protein_name :	Tumor necrosis factor receptor superfamily member 1B
Humangene_id :	7133
Humanswissprot_no :	P20333
Mousegene_id :	21938
Mouseswissprot_no :	P25119
Ratgene_id :	156767
Ratswissprot_no :	Q80WY6
Immunogen :	The antiserum was produced against synthesized peptide derived from human TNF Receptor II. AA range:376-425
Specificity :	TNF-R2 Polyclonal Antibody detects endogenous levels of TNF-R2 protein.
Formulation :	Liquid in PBS containing 50% glycerol, 0.5% BSA and 0.02% sodium azide.
Source :	Rabbit
Dilution :	Western Blot: 1/500 - 1/2000. Immunohistochemistry: 1/100 - 1/300. Immunofluorescence: 1/200 - 1/1000. ELISA: 1/20000. Not yet tested in other applications.
Purification :	The antibody was affinity-purified from rabbit antiserum by affinity-chromatography using epitope-specific immunogen.
Concentration :	1 mg/ml
Storage_stability :	-20°C/1 year



MsdS :	MSDS_Antibody.pdf
Other_name :	TNFRSF1B; TNFBR; TNFR2; Tumor necrosis factor receptor superfamily member 1B; Tumor necrosis factor receptor 2; TNF-R2; Tumor necrosis factor receptor type II; TNF-RII; TNFR-II; p75; p80 TNF-alpha receptor; CD antigen CD120b; Etanercept
Molecular Weight :	48KD

Product Images



Western Blot analysis of various cells using TNF-R2 Polyclonal Antibody diluted at 1 : 1000. Secondary antibody was diluted at 1:20000