

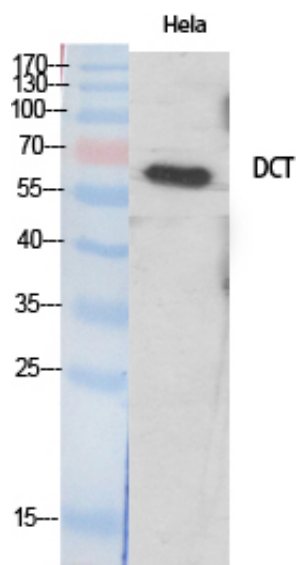
TRP2 Polyclonal Antibody

Catalog_no :	AT4750
Applications :	WB,IHC-p,IF,ELISA
Reactivity :	Human,Mouse
Category :	抗原抗体
Size :	100µg/50µg/20µg
Gene_name :	DCT
Protein_name :	L-dopachrome tautomerase
Humangene_id :	1638
Humanswissprot_no :	P40126
Mousegene_id :	13190
Mouseswissprot_no :	P29812
Immunogen :	The antiserum was produced against synthesized peptide derived from human DCT. AA range:51-100
Specificity :	TRP2 Polyclonal Antibody detects endogenous levels of TRP2 protein.
Formulation :	Liquid in PBS containing 50% glycerol, 0.5% BSA and 0.02% sodium azide.
Source :	Rabbit
Dilution :	Western Blot: 1/500 - 1/2000. Immunofluorescence: 1/200 - 1/1000. ELISA: 1/40000. Not yet tested in other applications.
Purification :	The antibody was affinity-purified from rabbit antiserum by affinity-chromatography using epitope-specific immunogen.
Concentration :	1 mg/ml
Storage_stability :	-20°C/1 year
Msds :	MSDS_Antibody.pdf
Other_name :	DCT; TYRP2; L-dopachrome tautomerase; DCT; DT; L-dopachrome Delta-isomerase; Tyrosinase-related protein 2; TRP-2; TRP2
Molecular	60KD



Weight :

Product Images



Western Blot analysis of various cells using TRP2 Polyclonal Antibody diluted at 1 : 500. Secondary antibody was diluted at 1:20000