

## TSLC1 Polyclonal Antibody

Catalog_no :	AT4764
Applications :	WB,IF,ELISA
Reactivity :	Human,Mouse
Category :	抗原抗体
Size :	100µg/50µg/20µg
Gene_name :	CADM1
Protein_name :	Cell adhesion molecule 1
Humangene_id :	<a href="#">23705</a>
Humanswissprot_no :	<a href="#">Q9BY67</a>
Mousegene_id :	<a href="#">54725</a>
Mouseswissprot_no :	<a href="#">Q8R5M8</a>
Immunogen :	The antiserum was produced against synthesized peptide derived from human CADM1. AA range:393-442
Specificity :	TSLC1 Polyclonal Antibody detects endogenous levels of TSLC1 protein.
Formulation :	Liquid in PBS containing 50% glycerol, 0.5% BSA and 0.02% sodium azide.
Source :	Rabbit
Dilution :	Western Blot: 1/500 - 1/2000. Immunofluorescence: 1/200 - 1/1000. ELISA: 1/20000. Not yet tested in other applications.
Purification :	The antibody was affinity-purified from rabbit antiserum by affinity-chromatography using epitope-specific immunogen.
Concentration :	1 mg/ml
Storage_stability :	-20°C/1 year
Msds :	MSDS_Antibody.pdf
Other_name :	CADM1; IGSF4; IGSF4A; NECL2; SYNCAM; TSLC1; Cell adhesion molecule 1; Immunoglobulin superfamily member 4; IgSF4; Nectin-like protein 2; NECL-2; Spermatogenic immunoglobulin superfamily; SgIgSF; Synaptic cell adhesion molecule; SynCAM; Tumo

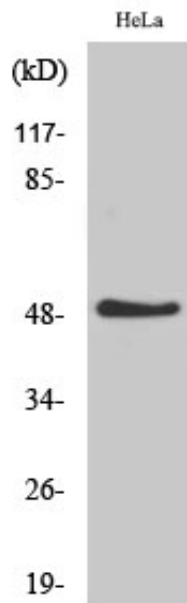


Molecular  
Weight :

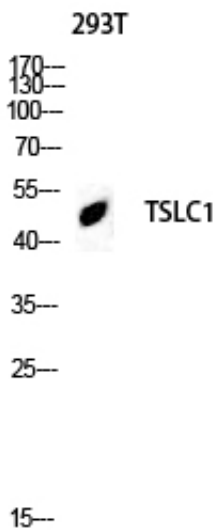
49KD

---

## Product Images



Western Blot analysis of various cells using TSLC1 Polyclonal Antibody diluted at 1 : 500. Secondary antibody was diluted at 1:20000



Western blot analysis of 293T lysis using TSLC1 antibody. Antibody was diluted at 1:500. Secondary antibody was diluted at 1:20000

Western blot analysis of 293T lysis using TSLC1 antibody. Antibody was diluted at 1:500. Secondary antibody was diluted at 1:20000

293T

