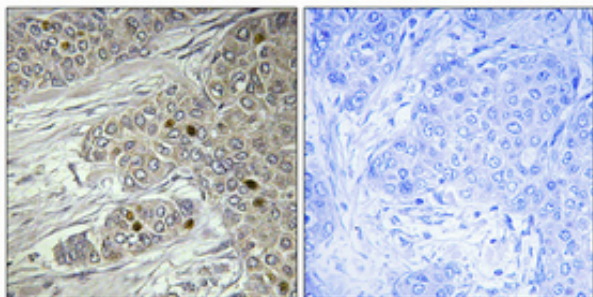


## TTF-I Polyclonal Antibody

|                     |   |
|---------------------|---|
| Catalog_no :        | AT4771  |
| Applications :      | IHC-p,ELISA   |
| Reactivity :        | Human   |
| Category :          | 抗原抗体  |
| Size :              | 100µg/50µg/20µg   |
| Gene_name :         | TTF1  |
| Protein_name :      | Transcription termination factor 1  |
| Humangene_id :      | <a href="#">7270</a>  |
| Humanswissprot_no : | <a href="#">Q15361</a>  |
| Immunogen :         | The antiserum was produced against synthesized peptide derived from human TTF1. AA range:10-59                                  |
| Specificity :       | TTF-I Polyclonal Antibody detects endogenous levels of TTF-I protein.   |
| Formulation :       | Liquid in PBS containing 50% glycerol, 0.5% BSA and 0.02% sodium azide.   |
| Source :            | Rabbit  |
| Dilution :          | Immunohistochemistry: 1/100 - 1/300. ELISA: 1/20000. Not yet tested in other applications.                                      |
| Purification :      | The antibody was affinity-purified from rabbit antiserum by affinity-chromatography using epitope-specific immunogen.           |
| Concentration :     | 1 mg/ml   |
| Storage_stability : | -20°C/1 year  |
| Msds :              | MSDS_Antibody.pdf   |
| Other_name :        | TTF1; Transcription termination factor 1; TTF-1; RNA polymerase I termination factor; Transcription termination factor I; TTF-I |

## Product Images



Immunohistochemical analysis of paraffin-embedded Human breast cancer. Antibody was diluted at 1:100(4°,overnight). High-pressure and temperature Tris-EDTA,pH8.0 was used for antigen retrieval. Negative contrl (right) obtaned from antibody was pre-absorbed by immunogen peptide.