

T-type Ca⁺⁺ CP α1H Polyclonal Antibody

Catalog_no :	<u>AT4773</u>
Applications :	<u>WB,ELISA</u>
Reactivity :	<u>Human,Mouse,Rat</u>
Category :	<u>抗原抗体</u>
Size :	<u>100μg/50μg/20μg</u>
Gene_name :	<u>CACNA1H</u>
Protein_name :	<u>Voltage-dependent T-type calcium channel subunit alpha-1H</u>
Humangene_id	<u>8912</u>
:	
Humanswissprot	<u>O95180</u>
_no :	
Mouseswissprot	<u>O88427</u>
_no :	
Ratgene_id :	<u>114862</u>
Ratswissprot_no	<u>Q9EQ60</u>
:	
Immunogen :	<u>The antiserum was produced against synthesized peptide derived from human CACNA1H. AA range:462-511</u>
Specificity :	<u>T-type Ca⁺⁺ CP α1H Polyclonal Antibody detects endogenous levels of T-type Ca⁺⁺ CP α1H protein.</u>
Formulation :	<u>Liquid in PBS containing 50% glycerol, 0.5% BSA and 0.02% sodium azide.</u>
Source :	<u>Rabbit</u>
Dilution :	<u>Western Blot: 1/500 - 1/2000. ELISA: 1/10000. Not yet tested in other applications.</u>
Purification :	<u>The antibody was affinity-purified from rabbit antiserum by affinity-chromatography using epitope-specific immunogen.</u>
Concentration :	<u>1 mg/ml</u>
Storage_stability	<u>-20°C/1 year</u>
:	
Msds :	<u>MSDS_Antibody.pdf</u>
Other_name :	<u>CACNA1H; Voltage-dependent T-type calcium channel subunit alpha-1H; Low-voltage-</u>

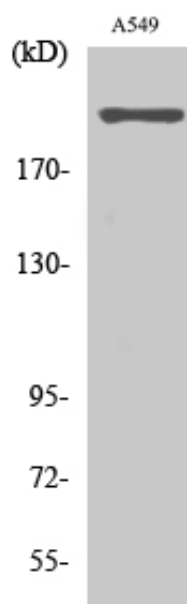


activated calcium channel alpha1 3.2 subunit; Voltage-gated calcium channel subunit
alpha Cav3.2

Molecular
Weight :

259KD

Product Images



Western Blot analysis of various cells using T-type Ca⁺⁺ CP α 1H Polyclonal Antibody. Secondary antibody was diluted at 1:20000