

Tubulin β Polyclonal Antibody

Catalog_no :	AT4780
Applications :	WB,IHC-p,IF,ELISA
Reactivity :	Human,Mouse,Rat,Pig,Cow
Category :	抗原抗体
Size :	100 μ g/50 μ g/20 μ g
Gene_name :	TUBB3
Protein_name :	Tubulin beta-3 chain
Humangene_id	10381
:	
Humanswissprot	Q13509
_no :	
Mousegene_id :	22152
Mouseswissprot	Q9ERD7
_no :	
Ratgene_id :	246118
Ratswissprot_no	Q4QRB4
:	
Immunogen :	The antiserum was produced against synthesized peptide derived from human Tubulin beta. AA range:401-450
Specificity :	Tubulin β Polyclonal Antibody detects endogenous levels of Tubulin β protein.
Formulation :	Liquid in PBS containing 50% glycerol, 0.5% BSA and 0.02% sodium azide.
Source :	Rabbit
Dilution :	Western Blot: 1/500 - 1/2000. Immunohistochemistry: 1/100 - 1/300. Immunofluorescence: 1/200 - 1/1000. ELISA: 1/5000. Not yet tested in other applications.
Purification :	The antibody was affinity-purified from rabbit antiserum by affinity-chromatography using epitope-specific immunogen.
Concentration :	1 mg/ml
Storage_stability	-20°C/1 year
:	

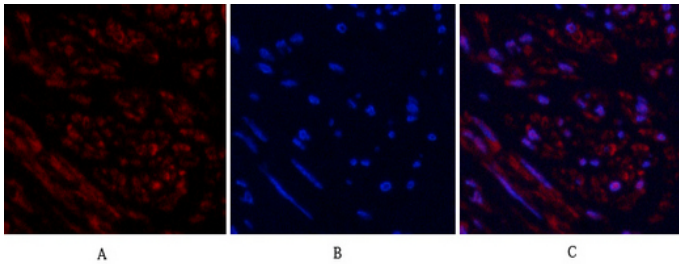


Msd : MSDS_Antibody.pdf

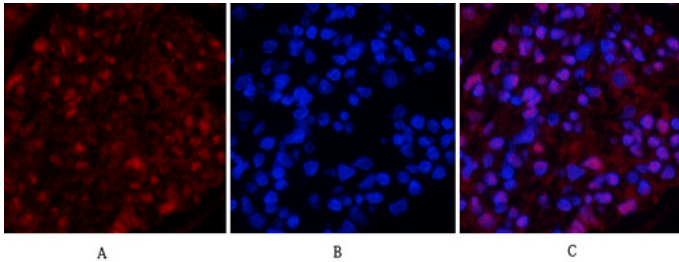
Other_name : TUBB3; TUBB4; Tubulin beta-3 chain; Tubulin beta-4 chain; Tubulin beta-III

Molecular Weight : 55KD

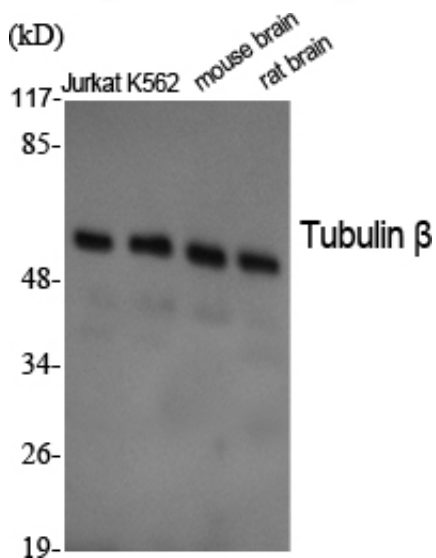
Product Images



Immunofluorescence analysis of human-uterus tissue. 1, Tubulin β Polyclonal Antibody (red) was diluted at 1:200 (4°C, overnight). 2, Cy3 labeled Secondary antibody was diluted at 1:300 (room temperature, 50min). 3, Picture B: DAPI (blue) 10min. Picture A: Target. Picture B: DAPI. Picture C: merge of A+B



Immunofluorescence analysis of rat-kidney tissue. 1, Tubulin β Polyclonal Antibody (red) was diluted at 1:200 (4°C, overnight). 2, Cy3 labeled Secondary antibody was diluted at 1:300 (room temperature, 50min). 3, Picture B: DAPI (blue) 10min. Picture A: Target. Picture B: DAPI. Picture C: merge of A+B



Western Blot analysis of various cells using Tubulin β Polyclonal Antibody diluted at 1 : 2000. Secondary antibody was diluted at 1:20000