

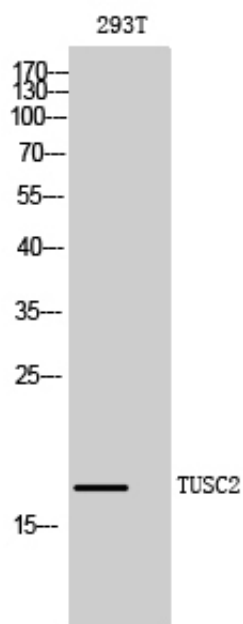
TUSC2 Polyclonal Antibody

Catalog_no :	AT4783
Applications :	WB,IHC-p,ELISA
Reactivity :	Human,Mouse
Category :	抗原抗体
Size :	100µg/50µg/20µg
Gene_name :	TUSC2
Protein_name :	Tumor suppressor candidate 2
Humangene_id :	11334
Humanswissprot_no :	O75896
Mousegene_id :	80385
Mouseswissprot_no :	Q9WVF8
Immunogen :	The antiserum was produced against synthesized peptide derived from human TUSC2. AA range:41-90
Specificity :	TUSC2 Polyclonal Antibody detects endogenous levels of TUSC2 protein.
Formulation :	Liquid in PBS containing 50% glycerol, 0.5% BSA and 0.02% sodium azide.
Source :	Rabbit
Dilution :	Western Blot: 1/500 - 1/2000. Immunohistochemistry: 1/100 - 1/300. ELISA: 1/5000. Not yet tested in other applications.
Purification :	The antibody was affinity-purified from rabbit antiserum by affinity-chromatography using epitope-specific immunogen.
Concentration :	1 mg/ml
Storage_stability :	-20°C/1 year
Msds :	MSDS_Antibody.pdf
Other_name :	TUSC2; C3orf11; FUS1; LGCC; PDAP2; Tumor suppressor candidate 2; Fusion 1 protein; Fus-1 protein; PDGFA-associated protein 2
Molecular	12KD

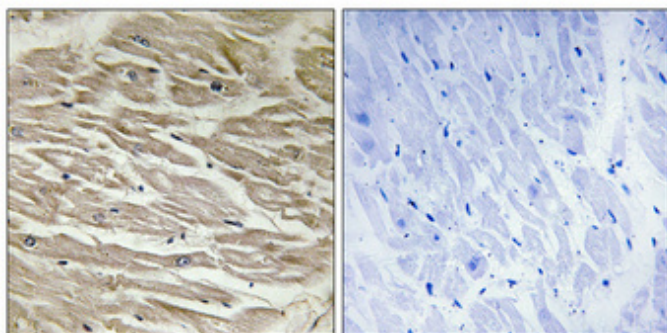


Weight :

Product Images



Western Blot analysis of 293T cells using TUSC2 Polyclonal Antibody diluted at 1 : 1000. Secondary antibody was diluted at 1:20000



Immunohistochemical analysis of paraffin-embedded Human heart. Antibody was diluted at 1:100(4°, overnight). High-pressure and temperature Tris-EDTA, pH8.0 was used for antigen retrieval. Negative control (right) obtained from antibody was pre-absorbed by immunogen peptide.