

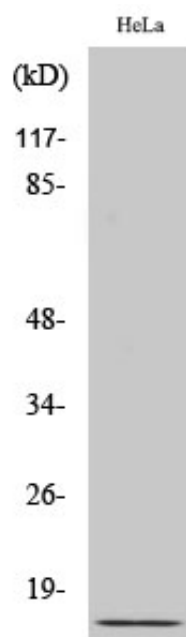
Ub Polyclonal Antibody

| | |
|---------------------|---|
| Catalog_no : | <u>AT4793</u> |
| Applications : | <u>WB,IHC-p,ELISA</u> |
| Reactivity : | <u>Human,Mouse,Rat</u> |
| Category : | <u>抗原抗体</u> |
| Size : | <u>100µg/50µg/20µg</u> |
| Gene_name : | <u>UBA52/RPS27A/UBB/UBC</u> |
| Protein_name : | <u>Ubiquitin</u> |
| Humangene_id : | <u>7311</u> |
| Humanswissprot_no : | <u>P0CG47/P0CG48/P62979/P62987</u> |
| Mousegene_id : | <u>22187/22190/78294/22186</u> |
| Ratgene_id : | <u>192255/50522/100912032/64156</u> |
| Ratswissprot_no : | <u>P0CG51/Q63429/P62982/P62986</u> |
| Immunogen : | <u>The antiserum was produced against synthesized peptide derived from human Ubiquitin. AA range:40-89</u> |
| Specificity : | <u>Ub Polyclonal Antibody detects endogenous levels of Ub protein.</u> |
| Formulation : | <u>Liquid in PBS containing 50% glycerol, 0.5% BSA and 0.02% sodium azide.</u> |
| Source : | <u>Rabbit</u> |
| Dilution : | <u>Western Blot: 1/500 - 1/2000. Immunohistochemistry: 1/100 - 1/300. ELISA: 1/20000. Not yet tested in other applications.</u> |
| Purification : | <u>The antibody was affinity-purified from rabbit antiserum by affinity-chromatography using epitope-specific immunogen.</u> |
| Concentration : | <u>1 mg/ml</u> |
| Storage_stability : | <u>-20°C/1 year</u> |
| Msds : | <u>MSDS_Antibody.pdf</u> |
| Other_name : | <u>UBB; Polyubiquitin-B; UBC; Polyubiquitin-C; RPS27A; UBA80; UBCEP1; Ubiquitin-40S ribosomal protein S27a; Ubiquitin carboxyl extension protein 80; UBA52; UBCEP2;</u> |



Ubiquitin-60S ribosomal protein L40; CEP52; Ubiquitin A-52 residue ribosomal pr

Product Images



Western Blot analysis of various cells using Ub Polyclonal Antibody. Secondary antibody was diluted at 1:20000