



## UBCE7IP4 Polyclonal Antibody

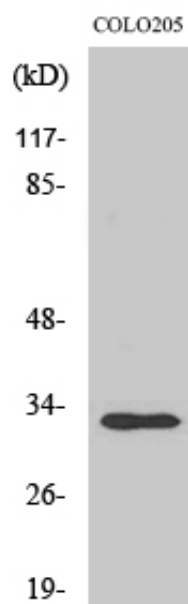
Catalog_no :	AT4796
Applications :	WB,ELISA
Reactivity :	Human,Mouse
Category :	抗原抗体
Size :	100µg/50µg/20µg
Gene_name :	RNF144A
Protein_name :	Probable E3 ubiquitin-protein ligase RNF144A
Humangene_id :	<a href="#">9781</a>
Humanswissprot_no :	<a href="#">P50876</a>
Mousegene_id :	<a href="#">108089</a>
Mouseswissprot_no :	<a href="#">Q925F3</a>
Immunogen :	The antiserum was produced against synthesized peptide derived from human RNF144A. AA range:151-200
Specificity :	UBCE7IP4 Polyclonal Antibody detects endogenous levels of UBCE7IP4 protein.
Formulation :	Liquid in PBS containing 50% glycerol, 0.5% BSA and 0.02% sodium azide.
Source :	Rabbit
Dilution :	Western Blot: 1/500 - 1/2000. ELISA: 1/40000. Not yet tested in other applications.
Purification :	The antibody was affinity-purified from rabbit antiserum by affinity-chromatography using epitope-specific immunogen.
Concentration :	1 mg/ml
Storage_stability :	-20°C/1 year
Msds :	MSDS_Antibody.pdf
Other_name :	RNF144A; KIAA0161; RNF144; UBCE7IP4; Probable E3 ubiquitin-protein ligase RNF144A; RING finger protein 144A; UbcM4-interacting protein 4; Ubiquitin-conjugating enzyme 7-interacting protein 4
Molecular	30KD



Weight :

---

## Product Images



Western Blot analysis of various cells using UBCE7IP4 Polyclonal Antibody. Secondary antibody was diluted at 1:20000