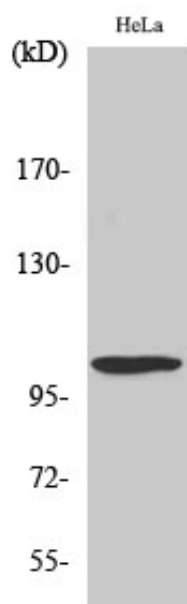


UBE1L Polyclonal Antibody

Catalog_no :	AT4797
Applications :	WB,IHC-p,ELISA
Reactivity :	Human
Category :	抗原抗体
Size :	100µg/50µg/20µg
Gene_name :	UBA7
Protein_name :	Ubiquitin-like modifier-activating enzyme 7
Humangene_id :	7318
Humanswissprot_no :	P41226
Immunogen :	The antiserum was produced against synthesized peptide derived from human UBE1L. AA range:963-1012
Specificity :	UBE1L Polyclonal Antibody detects endogenous levels of UBE1L protein.
Formulation :	Liquid in PBS containing 50% glycerol, 0.5% BSA and 0.02% sodium azide.
Source :	Rabbit
Dilution :	Western Blot: 1/500 - 1/2000. Immunohistochemistry: 1/100 - 1/300. ELISA: 1/10000. Not yet tested in other applications.
Purification :	The antibody was affinity-purified from rabbit antiserum by affinity-chromatography using epitope-specific immunogen.
Concentration :	1 mg/ml
Storage_stability :	-20°C/1 year
Msds :	MSDS_Antibody.pdf
Other_name :	UBA7; UBE1L; UBE2; Ubiquitin-like modifier-activating enzyme 7; Ubiquitin-activating enzyme 7; D8; Ubiquitin-activating enzyme E1 homolog
Molecular Weight :	112KD

Product Images



Western Blot analysis of various cells using UBE1L Polyclonal Antibody diluted at 1 : 2000. Secondary antibody was diluted at 1:20000