

UBE2D2 Polyclonal Antibody

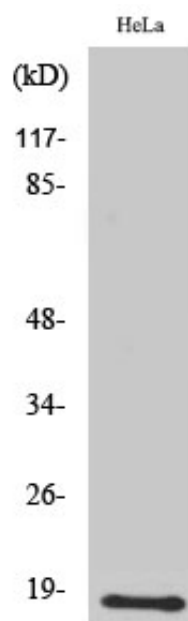
Catalog_no :	AT4798
Applications :	WB,ELISA
Reactivity :	Human,Mouse,Rat
Category :	抗原抗体
Size :	100µg/50µg/20µg
Gene_name :	UBE2D2
Protein_name :	Ubiquitin-conjugating enzyme E2 D2
Humangene_id :	7322
Humanswissprot_no :	P62837
Mousegene_id :	56550
Mouseswissprot_no :	P62838
Ratgene_id :	641452
Ratswissprot_no :	P62839
Immunogen :	The antiserum was produced against synthesized peptide derived from human UBE2D2. AA range:98-147
Specificity :	UBE2D2 Polyclonal Antibody detects endogenous levels of UBE2D2 protein.
Formulation :	Liquid in PBS containing 50% glycerol, 0.5% BSA and 0.02% sodium azide.
Source :	Rabbit
Dilution :	Western Blot: 1/500 - 1/2000. ELISA: 1/10000. Not yet tested in other applications.
Purification :	The antibody was affinity-purified from rabbit antiserum by affinity-chromatography using epitope-specific immunogen.
Concentration :	1 mg/ml
Storage_stability :	-20°C/1 year
Msds :	MSDS_Antibody.pdf



Other_name : UBE2D2; UBC4; UBC5B; UBCH4; UBCH5B; Ubiquitin-conjugating enzyme E2 D2; Ubiquitin carrier protein D2; Ubiquitin-conjugating enzyme E2(17)KB 2; Ubiquitin-conjugating enzyme E2-17 kDa 2; Ubiquitin-protein ligase D2

Molecular Weight : 17KD

Product Images



Western Blot analysis of various cells using UBE2D2 Polyclonal Antibody diluted at 1 : 2000. Secondary antibody was diluted at 1:20000