



UBE2T Polyclonal Antibody

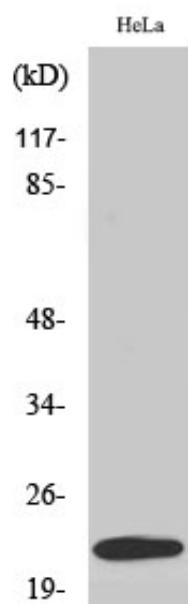
Catalog_no :	AT4800
Applications :	WB,ELISA
Reactivity :	Human,Mouse
Category :	抗原抗体
Size :	100µg/50µg/20µg
Gene_name :	UBE2T
Protein_name :	Ubiquitin-conjugating enzyme E2 T
Humangene_id :	29089
Humanswissprot_no :	Q9NPD8
Mousegene_id :	67196
Mouseswissprot_no :	Q9CQ37
Immunogen :	The antiserum was produced against synthesized peptide derived from human UBE2T. AA range:121-170
Specificity :	UBE2T Polyclonal Antibody detects endogenous levels of UBE2T protein.
Formulation :	Liquid in PBS containing 50% glycerol, 0.5% BSA and 0.02% sodium azide.
Source :	Rabbit
Dilution :	Western Blot: 1/500 - 1/2000. ELISA: 1/10000. Not yet tested in other applications.
Purification :	The antibody was affinity-purified from rabbit antiserum by affinity-chromatography using epitope-specific immunogen.
Concentration :	1 mg/ml
Storage_stability :	-20°C/1 year
Msds :	MSDS_Antibody.pdf
Other_name :	UBE2T; HSPC150; PIG50; Ubiquitin-conjugating enzyme E2 T; Cell proliferation-inducing gene 50 protein; Ubiquitin carrier protein T; Ubiquitin-protein ligase T
Molecular Weight :	22KD



专注二抗产品

Biodragon旗下品牌

Product Images



Western Blot analysis of various cells using UBE2T Polyclonal Antibody. Secondary antibody was diluted at 1:20000