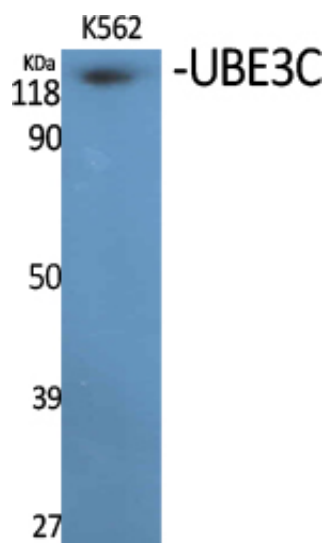




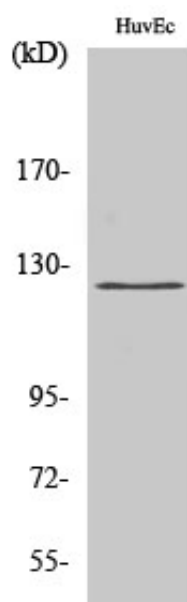
UBE3C Polyclonal Antibody

Catalog_no :	AT4802
Applications :	WB,ELISA
Reactivity :	Human
Category :	抗原抗体
Size :	100µg/50µg/20µg
Gene_name :	UBE3C
Protein_name :	Ubiquitin-protein ligase E3C
Humangene_id :	148581
Humanswissprot_no :	Q15386
Immunogen :	Synthesized peptide derived from the Internal region of human UBE3C.
Specificity :	UBE3C Polyclonal Antibody detects endogenous levels of UBE3C protein.
Formulation :	Liquid in PBS containing 50% glycerol, 0.5% BSA and 0.02% sodium azide.
Source :	Rabbit
Dilution :	Western Blot: 1/500 - 1/2000. ELISA: 1/10000. Not yet tested in other applications.
Purification :	The antibody was affinity-purified from rabbit antiserum by affinity-chromatography using epitope-specific immunogen.
Concentration :	1 mg/ml
Storage_stability :	-20°C/1 year
Msds :	MSDS_Antibody.pdf
Other_name :	UBE3C; KIAA0010; KIAA10; Ubiquitin-protein ligase E3C; HectH2
Molecular Weight :	125KD

Product Images



Western Blot analysis of various cells using UBE3C Polyclonal Antibody. Secondary antibody was diluted at 1:20000 cells nucleus extracted by Minute TM Cytoplasmic and Nuclear Fractionation kit (SC-003, Inventbiotech, MN, USA).



Western Blot analysis of HuvEc cells using UBE3C Polyclonal Antibody. Secondary antibody was diluted at 1:20000 cells nucleus extracted by Minute TM Cytoplasmic and Nuclear Fractionation kit (SC-003, Inventbiotech, MN, USA).