

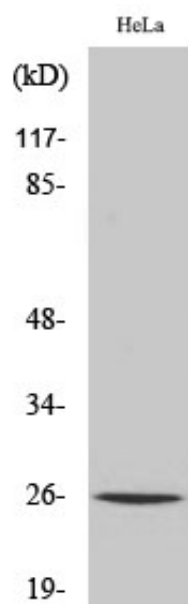
UMP-CMP Kinase Polyclonal Antibody

Catalog_no :	AT4821
Applications :	WB,IHC-p,IF,ELISA
Reactivity :	Human,Mouse,Rat
Category :	抗原抗体
Size :	100µg/50µg/20µg
Gene_name :	CMPK1
Protein_name :	UMP-CMP kinase
Humangene_id :	51727
Humanswissprot_no :	P30085
Mousegene_id :	66588
Mouseswissprot_no :	Q9DBP5
Ratgene_id :	298410
Ratswissprot_no :	Q4KM73
Immunogen :	The antiserum was produced against synthesized peptide derived from human KCY. AA range:1-50
Specificity :	UMP-CMP Kinase Polyclonal Antibody detects endogenous levels of UMP-CMP Kinase protein.
Formulation :	Liquid in PBS containing 50% glycerol, 0.5% BSA and 0.02% sodium azide.
Source :	Rabbit
Dilution :	Western Blot: 1/500 - 1/2000. Immunohistochemistry: 1/100 - 1/300. Immunofluorescence: 1/200 - 1/1000. ELISA: 1/10000. Not yet tested in other applications.
Purification :	The antibody was affinity-purified from rabbit antiserum by affinity-chromatography using epitope-specific immunogen.
Concentration :	1 mg/ml
Storage_stability :	-20°C/1 year



MsdS :	MSDS_Antibody.pdf
Other_name :	CMPK1; CMK; CMPK; UCK; UMK; UMPK; UMP-CMP kinase; Cytidine monophosphate kinase; Cytidylate kinase; Deoxycytidylate kinase; Uridine monophosphate kinase; Uridine monophosphate/cytidine monophosphate kinase; UMP/CMP kinase; UMP/CMPK
Molecular Weight :	22KD

Product Images



Western Blot analysis of various cells using UMP-CMP Kinase Polyclonal Antibody diluted at 1 : 500. Secondary antibody was diluted at 1:20000