



USP11 Polyclonal Antibody

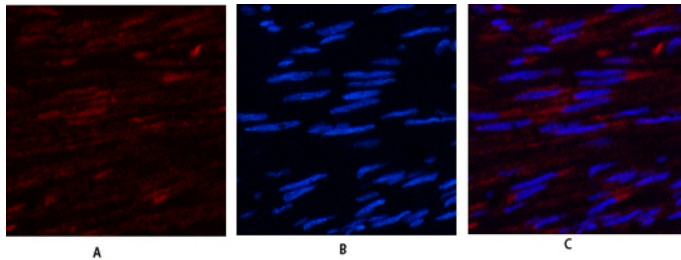
Catalog_no :	AT4828
Applications :	IF,WB,ELISA
Reactivity :	Human,Mouse,Rat
Category :	抗原抗体
Size :	100µg/50µg/20µg
Gene_name :	USP11
Protein_name :	Ubiquitin carboxyl-terminal hydrolase 11
Humangene_id :	8237
Humanswissprot_no :	P51784
Mousegene_id :	236733
Mouseswissprot_no :	Q99K46
Immunogen :	Synthesized peptide derived from the Internal region of human USP11.
Specificity :	USP11 Polyclonal Antibody detects endogenous levels of USP11 protein.
Formulation :	Liquid in PBS containing 50% glycerol, 0.5% BSA and 0.02% sodium azide.
Source :	Rabbit
Dilution :	IF: 1:50-200 Western Blot: 1/500 - 1/2000. ELISA: 1/20000. Not yet tested in other applications.
Purification :	The antibody was affinity-purified from rabbit antiserum by affinity-chromatography using epitope-specific immunogen.
Concentration :	1 mg/ml
Storage_stability :	-20°C/1 year
Msds :	MSDS_Antibody.pdf
Other_name :	USP11; UHX1; Ubiquitin carboxyl-terminal hydrolase 11; Deubiquitinating enzyme 11; Ubiquitin thioesterase 11; Ubiquitin-specific-processing protease 11
Molecular Weight :	105KD



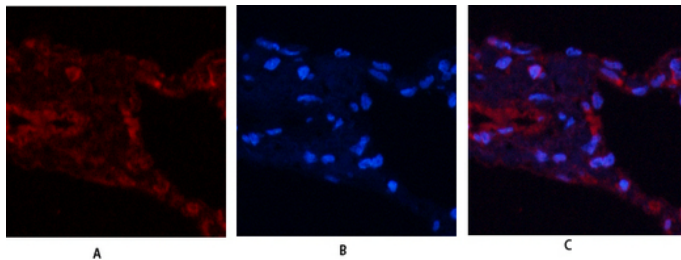
专注二抗产品

Biodragon旗下品牌

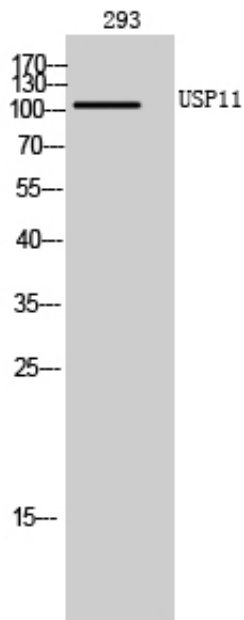
Product Images



Immunofluorescence analysis of human-uterus tissue. 1, USP11 Polyclonal Antibody (red) was diluted at 1:200 (4°, overnight). 2, Cy3 labeled Secondary antibody was diluted at 1:300 (room temperature, 50min). 3, Picture B: DAPI (blue) 10min. Picture A: Target. Picture B: DAPI. Picture C: merge of A+B



Immunofluorescence analysis of human-lung tissue. 1, USP11 Polyclonal Antibody (red) was diluted at 1:200 (4°, overnight). 2, Cy3 labeled Secondary antibody was diluted at 1:300 (room temperature, 50min). 3, Picture B: DAPI (blue) 10min. Picture A: Target. Picture B: DAPI. Picture C: merge of A+B



Western Blot analysis of 293 cells using USP11 Polyclonal Antibody. Secondary antibody was diluted at 1:20000 cells nucleus extracted by Minute TM Cytoplasmic and Nuclear Fractionation kit (SC-003, Invent biotech, MN, USA).