

USP16 Polyclonal Antibody

Catalog_no :	AT4831
Applications :	WB,ELISA
Reactivity :	Human,Mouse,Rat
Category :	抗原抗体
Size :	100µg/50µg/20µg
Gene_name :	USP16
Protein_name :	Ubiquitin carboxyl-terminal hydrolase 16
Humangene_id :	10600
Humanswissprot_no :	Q9Y5T5
Mousegene_id :	74112
Mouseswissprot_no :	Q99LG0
Ratgene_id :	288306
Ratswissprot_no :	Q2KJ09
Immunogen :	Synthesized peptide derived from the Internal region of human USP16.
Specificity :	USP16 Polyclonal Antibody detects endogenous levels of USP16 protein.
Formulation :	Liquid in PBS containing 50% glycerol, 0.5% BSA and 0.02% sodium azide.
Source :	Rabbit
Dilution :	Western Blot: 1/500 - 1/2000. ELISA: 1/10000. Not yet tested in other applications.
Purification :	The antibody was affinity-purified from rabbit antiserum by affinity-chromatography using epitope-specific immunogen.
Concentration :	1 mg/ml
Storage_stability :	-20°C/1 year
Msds :	MSDS_Antibody.pdf
Other_name :	USP16; MSTP039; Ubiquitin carboxyl-terminal hydrolase 16; Deubiquitinating enzyme

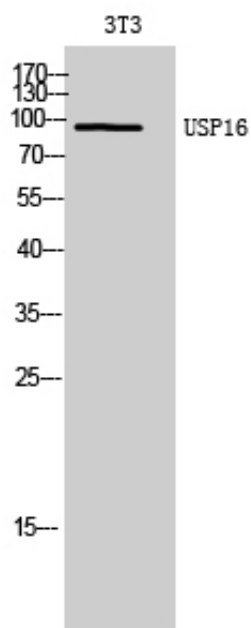


16; Ubiquitin thioesterase 16; Ubiquitin-processing protease UBP-M; Ubiquitin-specific-processing protease 16

Molecular
Weight :

93KD

Product Images



Western Blot analysis of 3T3 cells using USP16 Polyclonal Antibody. Secondary antibody was diluted at 1:20000