

UTP14A Polyclonal Antibody

Catalog_no :	AT4846
Applications :	WB,IHC-p,IF,ELISA
Reactivity :	Human,Mouse
Category :	抗原抗体
Size :	100µg/50µg/20µg
Gene_name :	UTP14A
Protein_name :	U3 small nucleolar RNA-associated protein 14 homolog A
Humangene_id :	10813
Humanswissprot_no :	Q9BVJ6
Mousegene_id :	72554
Mouseswissprot_no :	Q640M1
Immunogen :	The antiserum was produced against synthesized peptide derived from human UTP14A. AA range:321-370
Specificity :	UTP14A Polyclonal Antibody detects endogenous levels of UTP14A protein.
Formulation :	Liquid in PBS containing 50% glycerol, 0.5% BSA and 0.02% sodium azide.
Source :	Rabbit
Dilution :	Western Blot: 1/500 - 1/2000. Immunohistochemistry: 1/100 - 1/300. Immunofluorescence: 1/200 - 1/1000. ELISA: 1/20000. Not yet tested in other applications.
Purification :	The antibody was affinity-purified from rabbit antiserum by affinity-chromatography using epitope-specific immunogen.
Concentration :	1 mg/ml
Storage_stability :	-20°C/1 year
Msds :	MSDS_Antibody.pdf
Other_name :	UTP14A; SDCCAG16; U3 small nucleolar RNA-associated protein 14 homolog A; Antigen NY-CO-16; Serologically defined colon cancer antigen 16



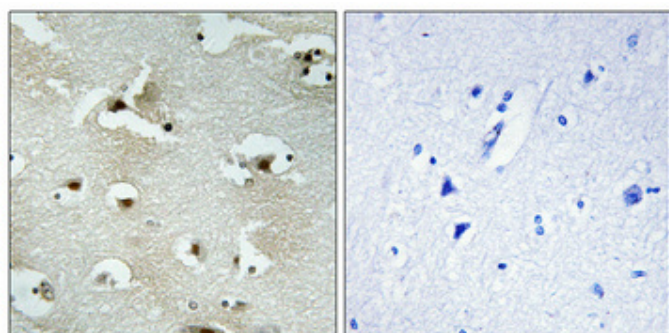
Molecular
Weight :

85KD

Product Images



Western Blot analysis of various cells using UTP14A Polyclonal Antibody diluted at 1 : 500. Secondary antibody was diluted at 1:20000 cells nucleus extracted by Minute TM Cytoplasmic and Nuclear Fractionation kit (SC-003, Invent biotech, MN, USA).



Immunohistochemical analysis of paraffin-embedded Human brain. Antibody was diluted at 1:100 (4°, overnight). High-pressure and temperature Tris-EDTA, pH 8.0 was used for antigen retrieval. Negative control (right) obtained from antibody was pre-absorbed by immunogen peptide.