

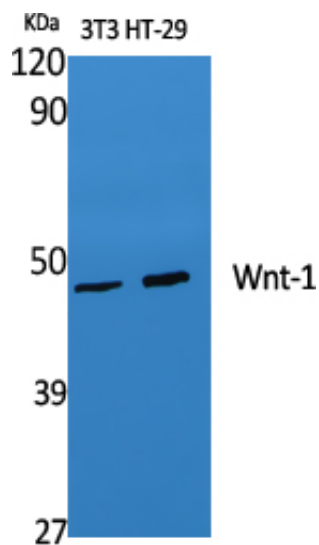
Wnt-1 Polyclonal Antibody

| | |
|---------------------|--|
| Catalog_no : | AT4907 |
| Applications : | WB,IHC-p,IF,ELISA |
| Reactivity : | Human,Mouse |
| Category : | 抗原抗体 |
| Size : | 100µg/50µg/20µg |
| Gene_name : | WNT1 |
| Protein_name : | Proto-oncogene Wnt-1 |
| Humangene_id : | 7471 |
| Humanswissprot_no : | P04628 |
| Mousegene_id : | 22408 |
| Mouseswissprot_no : | P04426 |
| Immunogen : | The antiserum was produced against synthesized peptide derived from human WNT1. AA range:301-350 |
| Specificity : | Wnt-1 Polyclonal Antibody detects endogenous levels of Wnt-1 protein. |
| Formulation : | Liquid in PBS containing 50% glycerol, 0.5% BSA and 0.02% sodium azide. |
| Source : | Rabbit |
| Dilution : | Western Blot: 1/500 - 1/2000. Immunohistochemistry: 1/100 - 1/300. Immunofluorescence: 1/200 - 1/1000. ELISA: 1/10000. Not yet tested in other applications. |
| Purification : | The antibody was affinity-purified from rabbit antiserum by affinity-chromatography using epitope-specific immunogen. |
| Concentration : | 1 mg/ml |
| Storage_stability : | -20°C/1 year |
| Msds : | MSDS_Antibody.pdf |
| Other_name : | WNT1; INT1; Proto-oncogene Wnt-1; Proto-oncogene Int-1 homolog |
| Molecular | 45KD |

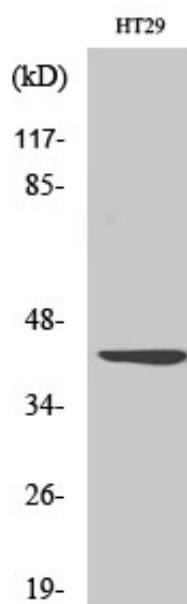


Weight :

Product Images



Western Blot analysis of various cells using Wnt-1 Polyclonal Antibody diluted at 1 : 1000. Secondary antibody was diluted at 1:20000



Western Blot analysis of HT29 cells using Wnt-1 Polyclonal Antibody diluted at 1 : 1000. Secondary antibody was diluted at 1:20000