

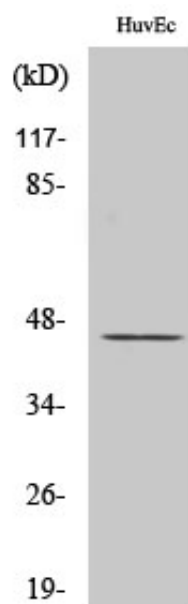
WTAP Polyclonal Antibody

Catalog_no :	AT4908
Applications :	WB,IHC-p,ELISA
Reactivity :	Human,Mouse
Category :	抗原抗体
Size :	100µg/50µg/20µg
Gene_name :	WTAP
Protein_name :	Pre-mRNA-splicing regulator WTAP
Humangene_id :	9589
Humanswissprot_no :	Q15007
Mousegene_id :	60532
Mouseswissprot_no :	Q9ER69
Immunogen :	The antiserum was produced against synthesized peptide derived from human WTAP. AA range:321-370
Specificity :	WTAP Polyclonal Antibody detects endogenous levels of WTAP protein.
Formulation :	Liquid in PBS containing 50% glycerol, 0.5% BSA and 0.02% sodium azide.
Source :	Rabbit
Dilution :	Western Blot: 1/500 - 1/2000. Immunohistochemistry: 1/100 - 1/300. ELISA: 1/20000. Not yet tested in other applications.
Purification :	The antibody was affinity-purified from rabbit antiserum by affinity-chromatography using epitope-specific immunogen.
Concentration :	1 mg/ml
Storage_stability :	-20°C/1 year
Msds :	MSDS_Antibody.pdf
Other_name :	WTAP; KIAA0105; Pre-mRNA-splicing regulator WTAP; Female-lethal(2)D homolog; hFL(2)D; WT1-associated protein; Wilms tumor 1-associating protein
Molecular	44KD



Weight :

Product Images



Western Blot analysis of various cells using WTAP Polyclonal Antibody diluted at 1 : 500. Secondary antibody was diluted at 1:20000 cells nucleus extracted by Minute TM Cytoplasmic and Nuclear Fractionation kit (SC-003, Inventbiotech, MN, USA).