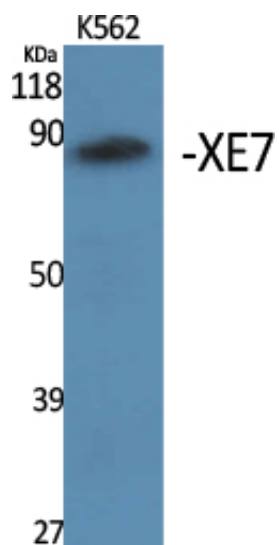




XE7 Polyclonal Antibody

Catalog_no :	AT4912
Applications :	WB,ELISA
Reactivity :	Human
Category :	抗原抗体
Size :	100µg/50µg/20µg
Gene_name :	AKAP17A
Protein_name :	A-kinase anchor protein 17A
Humangene_id :	8227
Humanswissprot_no :	Q02040
Immunogen :	Synthesized peptide derived from XE7 . at AA range: 590-670
Specificity :	XE7 Polyclonal Antibody detects endogenous levels of XE7 protein.
Formulation :	Liquid in PBS containing 50% glycerol, 0.5% BSA and 0.02% sodium azide.
Source :	Rabbit
Dilution :	Western Blot: 1/500 - 1/2000. ELISA: 1/40000. Not yet tested in other applications.
Purification :	The antibody was affinity-purified from rabbit antiserum by affinity-chromatography using epitope-specific immunogen.
Concentration :	1 mg/ml
Storage_stability :	-20°C/1 year
Msds :	MSDS_Antibody.pdf
Other_name :	AKAP17A; CXYorf3; DXYS155E; SFRS17A; XE7; A-kinase anchor protein 17A; AKAP-17A; 721P; B-lymphocyte antigen; Protein XE7; Protein kinase A-anchoring protein 17A; PRKA17A; Splicing factor; arginine/serine-rich 17A
Molecular Weight :	80KD

Product Images



Western Blot analysis of various cells using XE7 Polyclonal Antibody. Secondary antibody was diluted at 1:20000 cells nucleus extracted by Minute TM Cytoplasmic and Nuclear Fractionation kit (SC-003, Inventbiotech, MN, USA).