

XIAP Polyclonal Antibody

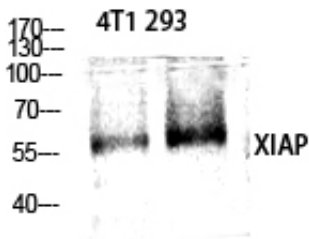
Catalog_no :	AT4913
Applications :	WB,IHC-p,ELISA
Reactivity :	Human,Mouse,Rat
Category :	抗原抗体
Size :	100µg/50µg/20µg
Gene_name :	XIAP
Protein_name :	E3 ubiquitin-protein ligase XIAP
Humangene_id :	331
Humanswissprot_no :	P98170
Mousegene_id :	11798
Mouseswissprot_no :	Q60989
Ratgene_id :	63879
Ratswissprot_no :	Q9R0I6
Immunogen :	The antiserum was produced against synthesized peptide derived from human XIAP. AA range:53-102
Specificity :	XIAP Polyclonal Antibody detects endogenous levels of XIAP protein.
Formulation :	Liquid in PBS containing 50% glycerol, 0.5% BSA and 0.02% sodium azide.
Source :	Rabbit
Dilution :	Western Blot: 1/500 - 1/2000. Immunohistochemistry: 1/100 - 1/300. ELISA: 1/20000. Not yet tested in other applications.
Purification :	The antibody was affinity-purified from rabbit antiserum by affinity-chromatography using epitope-specific immunogen.
Concentration :	1 mg/ml
Storage_stability :	-20°C/1 year
Msds :	MSDS_Antibody.pdf



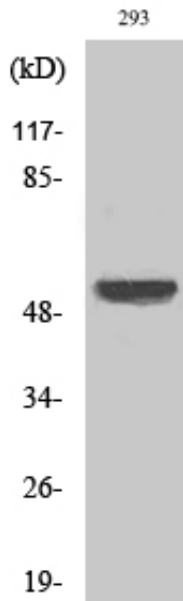
Other_name : XIAP; API3; BIRC4; IAP3; E3 ubiquitin-protein ligase XIAP; Baculoviral IAP repeat-containing protein 4; IAP-like protein; ILP; hILP; Inhibitor of apoptosis protein 3; IAP-3; hIAP-3; hIAP3; X-linked inhibitor of apoptosis protein; X-linked I

Molecular Weight : 57KD

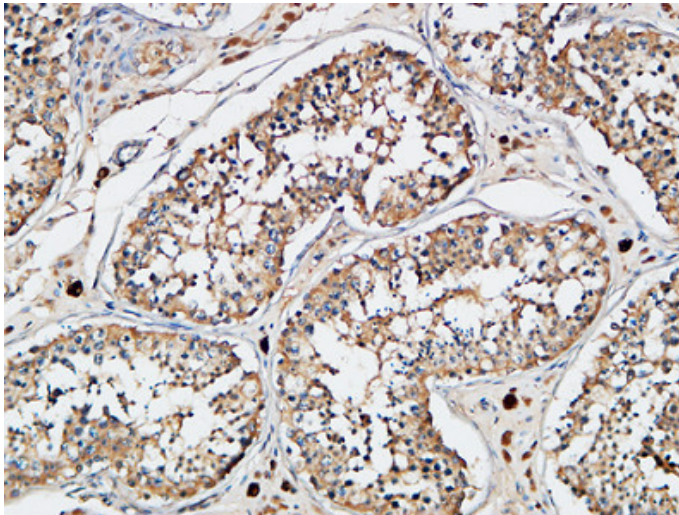
Product Images



Western Blot analysis of various cells using XIAP Polyclonal Antibody diluted at 1 : 1000. Secondary antibody was diluted at 1:20000

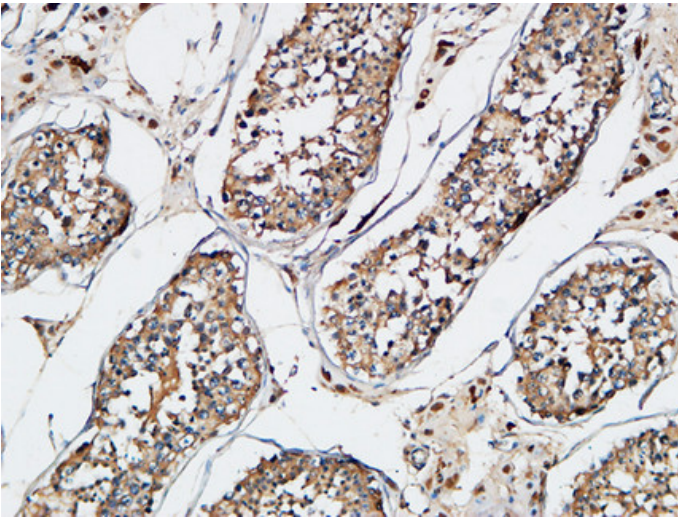
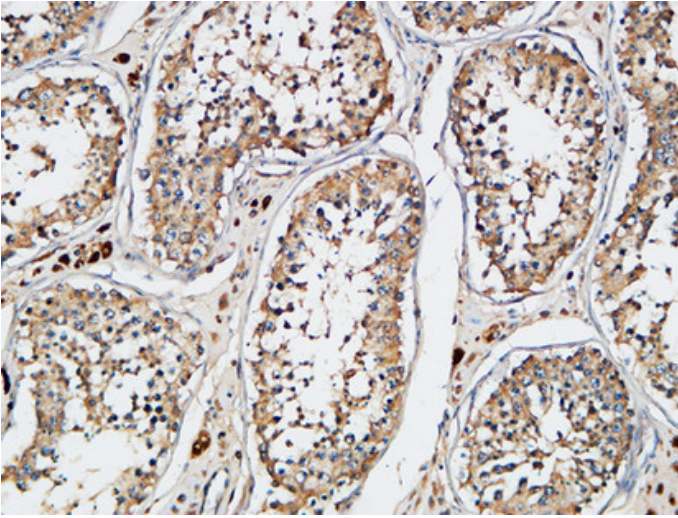


Western Blot analysis of 293 cells using XIAP Polyclonal Antibody diluted at 1 : 1000. Secondary antibody was diluted at 1:20000

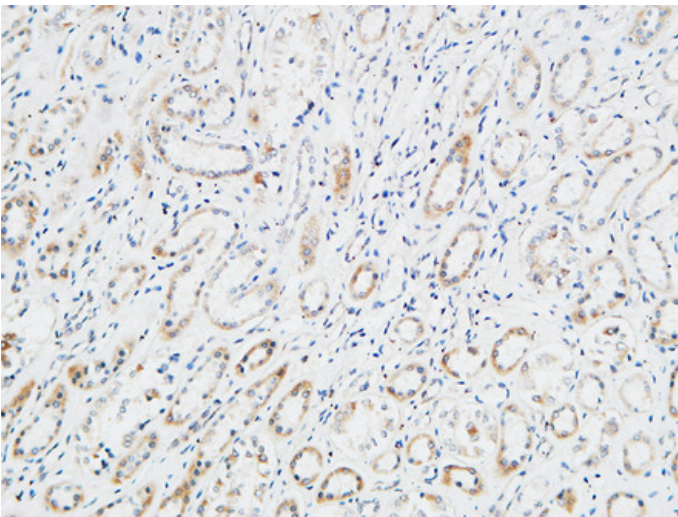


Immunohistochemical analysis of paraffin-embedded Human testis. 1, Antibody was diluted at 1:200(4°,overnight). 2, High-pressure and temperature EDTA, pH8.0 was used for antigen retrieval. 3,Secondary antibody was diluted at 1:200(room temperature, 30min).

Immunohistochemical analysis of paraffin-embedded Human testis. 1, Antibody was diluted at 1:200(4°,overnight). 2, High-pressure and temperature EDTA, pH8.0 was used for antigen retrieval. 3,Secondary antibody was diluted at 1:200(room temperature, 30min).

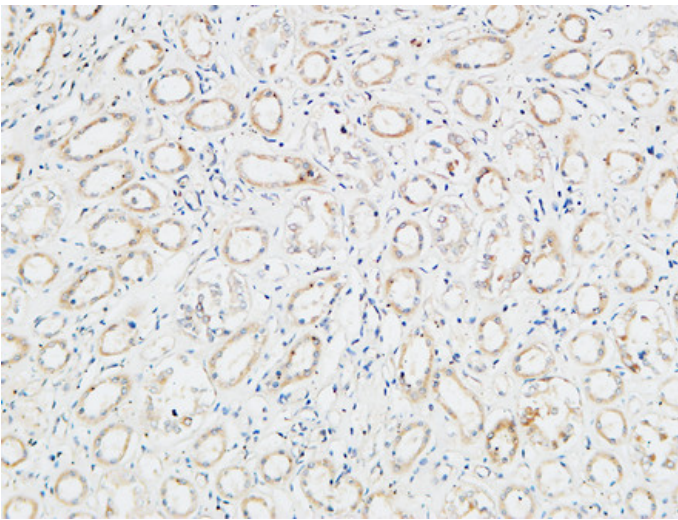
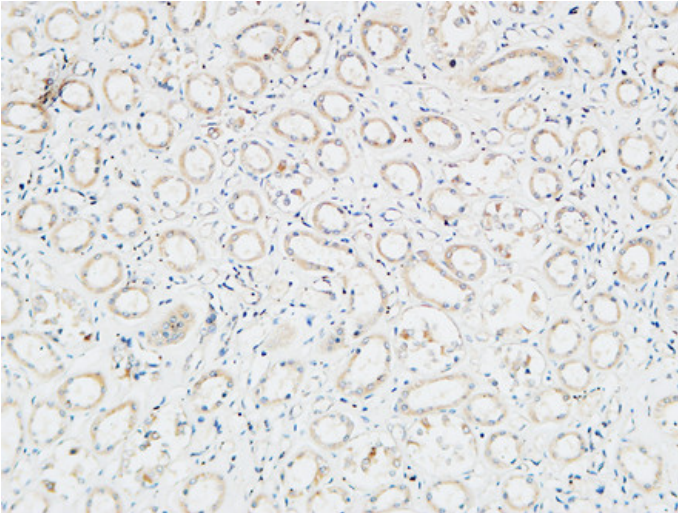


Immunohistochemical analysis of paraffin-embedded Human testis. 1, Antibody was diluted at 1:200(4°,overnight). 2, High-pressure and temperature EDTA, pH8.0 was used for antigen retrieval. 3,Secondary antibody was diluted at 1:200(room temperature, 30min).



Immunohistochemical analysis of paraffin-embedded Human kidney. 1, Antibody was diluted at 1:200(4°,overnight). 2, High-pressure and temperature EDTA, pH8.0 was used for antigen retrieval. 3,Secondary antibody was diluted at 1:200(room temperature, 30min).

Immunohistochemical analysis of paraffin-embedded Human kidney. 1, Antibody was diluted at 1:200(4°,overnight). 2, High-pressure and temperature EDTA, pH8.0 was used for antigen retrieval. 3,Secondary antibody was diluted at 1:200(room temperature, 30min).



Immunohistochemical analysis of paraffin-embedded Human kidney. 1, Antibody was diluted at 1:200(4°,overnight). 2, High-pressure and temperature EDTA, pH8.0 was used for antigen retrieval. 3,Secondary antibody was diluted at 1:200(room temperature, 30min).