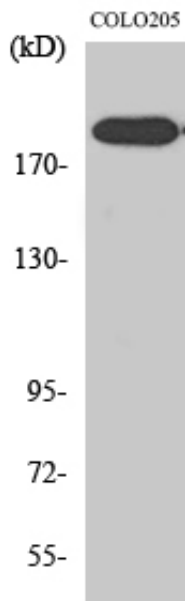


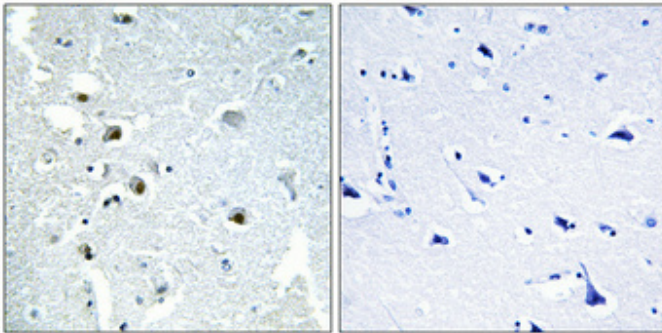
## XPG Polyclonal Antibody

Catalog_no :	AT4915
Applications :	WB,IHC-p,IF,ELISA
Reactivity :	Human
Category :	抗原抗体
Size :	100µg/50µg/20µg
Gene_name :	ERCC5
Protein_name :	DNA repair protein complementing XP-G cells
Humangene_id :	<a href="#">2073</a>
Humanswissprot_no :	<a href="#">P28715</a>
Immunogen :	The antiserum was produced against synthesized peptide derived from human ERCC5. AA range:131-180
Specificity :	XPG Polyclonal Antibody detects endogenous levels of XPG protein.
Formulation :	Liquid in PBS containing 50% glycerol, 0.5% BSA and 0.02% sodium azide.
Source :	Rabbit
Dilution :	Western Blot: 1/500 - 1/2000. Immunohistochemistry: 1/100 - 1/300. Immunofluorescence: 1/200 - 1/1000. ELISA: 1/5000. Not yet tested in other applications.
Purification :	The antibody was affinity-purified from rabbit antiserum by affinity-chromatography using epitope-specific immunogen.
Concentration :	1 mg/ml
Storage_stability :	-20°C/1 year
Msds :	MSDS_Antibody.pdf
Other_name :	ERCC5; ERCM2; XPG; XPGC; DNA repair protein complementing XP-G cells; DNA excision repair protein ERCC-5; Xeroderma pigmentosum group G-complementing protein
Molecular Weight :	130KD

## Product Images



Western Blot analysis of various cells using XPG Polyclonal Antibody diluted at 1 : 2000. Secondary antibody was diluted at 1:20000 cells nucleus extracted by Minute TM Cytoplasmic and Nuclear Fractionation kit (SC-003, Invent biotech, MN, USA).



Immunohistochemical analysis of paraffin-embedded Human brain. Antibody was diluted at 1:100(4°, overnight). High-pressure and temperature Tris-EDTA, pH8.0 was used for antigen retrieval. Negative control (right) obtained from antibody was pre-absorbed by immunogen peptide.