



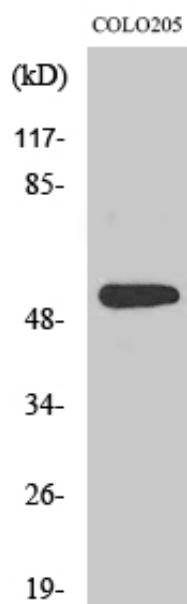
XPLN Polyclonal Antibody

Catalog_no :	AT4916
Applications :	WB,IHC-p,ELISA
Reactivity :	Human,Mouse,Rat
Category :	抗原抗体
Size :	100µg/50µg/20µg
Gene_name :	ARHGEF3
Protein_name :	Rho guanine nucleotide exchange factor 3
Humangene_id :	50650
Humanswissprot_no :	Q9NR81
Mousegene_id :	71704
Mouseswissprot_no :	Q91X46
Immunogen :	The antiserum was produced against synthesized peptide derived from human ARHGEF3. AA range:456-505
Specificity :	XPLN Polyclonal Antibody detects endogenous levels of XPLN protein.
Formulation :	Liquid in PBS containing 50% glycerol, 0.5% BSA and 0.02% sodium azide.
Source :	Rabbit
Dilution :	Western Blot: 1/500 - 1/2000.IHC-p:1:50-300 ELISA: 1/20000. Not yet tested in other applications.
Purification :	The antibody was affinity-purified from rabbit antiserum by affinity-chromatography using epitope-specific immunogen.
Concentration :	1 mg/ml
Storage_stability :	-20°C/1 year
Msds :	MSDS_Antibody.pdf
Other_name :	ARHGEF3; Rho guanine nucleotide exchange factor 3; Exchange factor found in platelets and leukemic and neuronal tissues; XPLN
Molecular	55KD



Weight :

Product Images



Western Blot analysis of various cells using XPLN Polyclonal Antibody. Secondary antibody was diluted at 1:20000