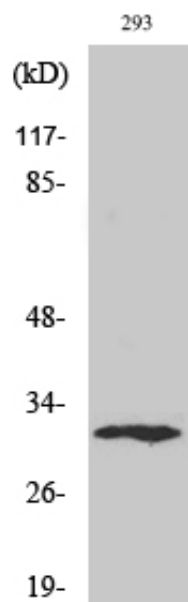


XRCC2 Polyclonal Antibody

Catalog_no :	AT4918
Applications :	WB,IHC-p,ELISA
Reactivity :	Human
Category :	抗原抗体
Size :	100µg/50µg/20µg
Gene_name :	XRCC2
Protein_name :	DNA repair protein XRCC2
Humangene_id :	7516
Humanswissprot_no :	O43543
Immunogen :	The antiserum was produced against synthesized peptide derived from human XRCC2. AA range:211-260
Specificity :	XRCC2 Polyclonal Antibody detects endogenous levels of XRCC2 protein.
Formulation :	Liquid in PBS containing 50% glycerol, 0.5% BSA and 0.02% sodium azide.
Source :	Rabbit
Dilution :	Western Blot: 1/500 - 1/2000. Immunohistochemistry: 1/100 - 1/300. ELISA: 1/10000. Not yet tested in other applications.
Purification :	The antibody was affinity-purified from rabbit antiserum by affinity-chromatography using epitope-specific immunogen.
Concentration :	1 mg/ml
Storage_stability :	-20°C/1 year
Msds :	MSDS_Antibody.pdf
Other_name :	XRCC2; DNA repair protein XRCC2; X-ray repair cross-complementing protein 2
Molecular Weight :	32KD

Product Images



Western Blot analysis of various cells using XRCC2 Polyclonal Antibody diluted at 1 : 2000. Secondary antibody was diluted at 1:20000 cells nucleus extracted by Minute TM Cytoplasmic and Nuclear Fractionation kit (SC-003, Inventbiotech, MN, USA).