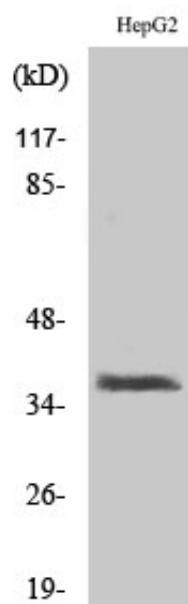


## XRCC3 Polyclonal Antibody

Catalog_no :	AT4919
Applications :	WB,IHC-p,ELISA
Reactivity :	Human
Category :	抗原抗体
Size :	100µg/50µg/20µg
Gene_name :	XRCC3
Protein_name :	DNA repair protein XRCC3
Humangene_id :	<a href="#">7517</a>
Humanswissprot_no :	<a href="#">O43542</a>
Immunogen :	The antiserum was produced against synthesized peptide derived from human XRCC3. AA range:41-90
Specificity :	XRCC3 Polyclonal Antibody detects endogenous levels of XRCC3 protein.
Formulation :	Liquid in PBS containing 50% glycerol, 0.5% BSA and 0.02% sodium azide.
Source :	Rabbit
Dilution :	Western Blot: 1/500 - 1/2000. Immunohistochemistry: 1/100 - 1/300. ELISA: 1/10000. Not yet tested in other applications.
Purification :	The antibody was affinity-purified from rabbit antiserum by affinity-chromatography using epitope-specific immunogen.
Concentration :	1 mg/ml
Storage_stability :	-20°C/1 year
Msds :	MSDS_Antibody.pdf
Other_name :	XRCC3; DNA repair protein XRCC3; X-ray repair cross-complementing protein 3
Molecular Weight :	38KD

## Product Images



Western Blot analysis of various cells using XRCC3 Polyclonal Antibody. Secondary antibody was diluted at 1:20000 cells nucleus extracted by Minute TM Cytoplasmic and Nuclear Fractionation kit (SC-003, Inventbiotech, MN, USA).