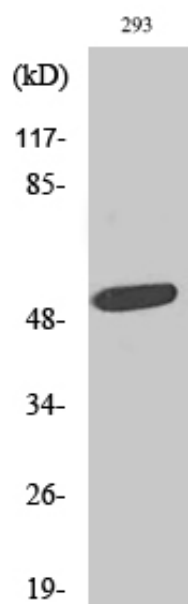


ZAC1 Polyclonal Antibody

Catalog_no :	AT4927
Applications :	WB,ELISA
Reactivity :	Human
Category :	抗原抗体
Size :	100µg/50µg/20µg
Gene_name :	PLAGL1
Protein_name :	Zinc finger protein PLAGL1
Humangene_id :	5325
Humanswissprot_no :	Q9UM63
Immunogen :	The antiserum was produced against synthesized peptide derived from human PLAGL1. AA range:311-360
Specificity :	ZAC1 Polyclonal Antibody detects endogenous levels of ZAC1 protein.
Formulation :	Liquid in PBS containing 50% glycerol, 0.5% BSA and 0.02% sodium azide.
Source :	Rabbit
Dilution :	Western Blot: 1/500 - 1/2000. ELISA: 1/10000. Not yet tested in other applications.
Purification :	The antibody was affinity-purified from rabbit antiserum by affinity-chromatography using epitope-specific immunogen.
Concentration :	1 mg/ml
Storage_stability :	-20°C/1 year
Msds :	MSDS_Antibody.pdf
Other_name :	PLAGL1; LOT1; ZAC; Zinc finger protein PLAGL1; Lost on transformation 1; LOT-1; Pleiomorphic adenoma-like protein 1; Tumor supressor ZAC
Molecular Weight :	50KD

Product Images



Western Blot analysis of various cells using ZAC1 Polyclonal Antibody. Secondary antibody was diluted at 1:20000 cells nucleus extracted by Minute TM Cytoplasmic and Nuclear Fractionation kit (SC-003, Invent biotech, MN, USA).