

ZADH2 Polyclonal Antibody

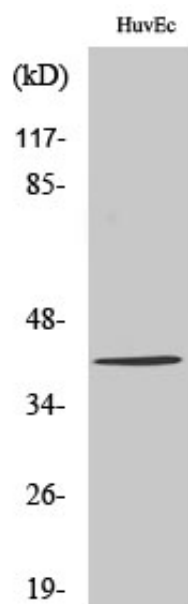
Catalog_no :	AT4928
Applications :	WB,IHC-p,ELISA
Reactivity :	Human,Mouse,Rat
Category :	抗原抗体
Size :	100µg/50µg/20µg
Gene_name :	ZADH2
Protein_name :	Zinc-binding alcohol dehydrogenase domain-containing protein 2
Humangene_id :	284273
Humanswissprot_no :	Q8N4Q0
Mousegene_id :	225791
Mouseswissprot_no :	Q8BGC4
Immunogen :	The antiserum was produced against synthesized peptide derived from human ZADH2. AA range:191-240
Specificity :	ZADH2 Polyclonal Antibody detects endogenous levels of ZADH2 protein.
Formulation :	Liquid in PBS containing 50% glycerol, 0.5% BSA and 0.02% sodium azide.
Source :	Rabbit
Dilution :	Western Blot: 1/500 - 1/2000. Immunohistochemistry: 1/100 - 1/300. ELISA: 1/10000. Not yet tested in other applications.
Purification :	The antibody was affinity-purified from rabbit antiserum by affinity-chromatography using epitope-specific immunogen.
Concentration :	1 mg/ml
Storage_stability :	-20°C/1 year
Msds :	MSDS_Antibody.pdf
Other_name :	ZADH2; Zinc-binding alcohol dehydrogenase domain-containing protein 2
Molecular Weight :	45KD



专注二抗产品

Biodragon旗下品牌

Product Images



Western Blot analysis of various cells using ZADH2 Polyclonal Antibody. Secondary antibody was diluted at 1:20000