

## ZBP-89 Polyclonal Antibody

Catalog_no :	AT4934
Applications :	WB,IHC-p,IF,ELISA
Reactivity :	Human,Mouse,Rat
Category :	抗原抗体
Size :	100µg/50µg/20µg
Gene_name :	ZNF148
Protein_name :	Zinc finger protein 148
Humangene_id :	<a href="#">7707</a>
Humanswissprot_no :	<a href="#">Q9UQR1</a>
Mousegene_id :	<a href="#">22661</a>
Mouseswissprot_no :	<a href="#">Q61624</a>
Ratgene_id :	<a href="#">58820</a>
Ratswissprot_no :	<a href="#">Q62806</a>
Immunogen :	The antiserum was produced against synthesized peptide derived from human ZNF148. AA range:61-110
Specificity :	ZBP-89 Polyclonal Antibody detects endogenous levels of ZBP-89 protein.
Formulation :	Liquid in PBS containing 50% glycerol, 0.5% BSA and 0.02% sodium azide.
Source :	Rabbit
Dilution :	Western Blot: 1/500 - 1/2000. Immunohistochemistry: 1/100 - 1/300. Immunofluorescence: 1/200 - 1/1000. ELISA: 1/5000. Not yet tested in other applications.
Purification :	The antibody was affinity-purified from rabbit antiserum by affinity-chromatography using epitope-specific immunogen.
Concentration :	1 mg/ml
Storage_stability :	-20°C/1 year

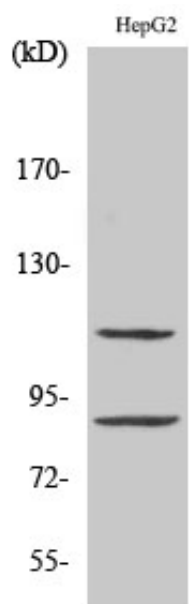


Msd : [MSDS\\_Antibody.pdf](#)

Other\_name : ZNF148; ZBP89; Zinc finger protein 148; Transcription factor ZBP-89; Zinc finger DNA-binding protein 89

Molecular Weight : 89KD

## Product Images



Western Blot analysis of various cells using ZBP-89 Polyclonal Antibody. Secondary antibody was diluted at 1:20000