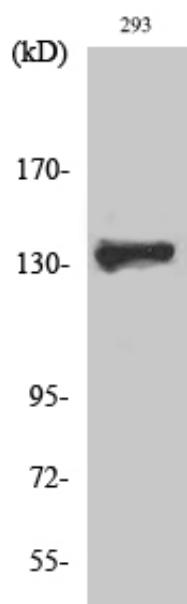




## ZBTB40 Polyclonal Antibody

Catalog_no :	AT4935
Applications :	WB,IHC-p,ELISA
Reactivity :	Human,Mouse
Category :	抗原抗体
Size :	100µg/50µg/20µg
Gene_name :	ZBTB40
Protein_name :	Zinc finger and BTB domain-containing protein 40
Humangene_id :	<a href="#">9923</a>
Humanswissprot_no :	<a href="#">Q9NUA8</a>
Immunogen :	The antiserum was produced against synthesized peptide derived from human ZBTB40. AA range:1121-1170
Specificity :	ZBTB40 Polyclonal Antibody detects endogenous levels of ZBTB40 protein.
Formulation :	Liquid in PBS containing 50% glycerol, 0.5% BSA and 0.02% sodium azide.
Source :	Rabbit
Dilution :	Western Blot: 1/500 - 1/2000. Immunohistochemistry: 1/100 - 1/300. ELISA: 1/10000. Not yet tested in other applications.
Purification :	The antibody was affinity-purified from rabbit antiserum by affinity-chromatography using epitope-specific immunogen.
Concentration :	1 mg/ml
Storage_stability :	-20°C/1 year
Msds :	MSDS_Antibody.pdf
Other_name :	ZBTB40; KIAA0478; Zinc finger and BTB domain-containing protein 40
Molecular Weight :	140KD

## Product Images



Western Blot analysis of various cells using ZBTB40 Polyclonal Antibody. Secondary antibody was diluted at 1:20000 cells nucleus extracted by Minute TM Cytoplasmic and Nuclear Fractionation kit (SC-003, Invent biotech, MN, USA).