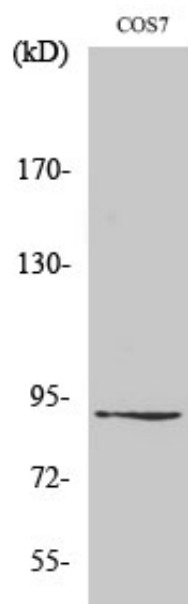




ZC3H11A Polyclonal Antibody

| | |
|---------------------|--|
| Catalog_no : | <u>AT4936</u> |
| Applications : | <u>WB,ELISA</u> |
| Reactivity : | <u>Human,Monkey</u> |
| Category : | <u>抗原抗体</u> |
| Size : | <u>100µg/50µg/20µg</u> |
| Gene_name : | <u>ZC3H11A</u> |
| Protein_name : | <u>Zinc finger CCCH domain-containing protein 11A</u> |
| Humangene_id : | <u>9877</u> |
| Humanswissprot_no : | <u>O75152</u> |
| Immunogen : | <u>The antiserum was produced against synthesized peptide derived from human ZC3H11A. AA range:291-340</u> |
| Specificity : | <u>ZC3H11A Polyclonal Antibody detects endogenous levels of ZC3H11A protein.</u> |
| Formulation : | <u>Liquid in PBS containing 50% glycerol, 0.5% BSA and 0.02% sodium azide.</u> |
| Source : | <u>Rabbit</u> |
| Dilution : | <u>Western Blot: 1/500 - 1/2000. ELISA: 1/20000. Not yet tested in other applications.</u> |
| Purification : | <u>The antibody was affinity-purified from rabbit antiserum by affinity-chromatography using epitope-specific immunogen.</u> |
| Concentration : | <u>1 mg/ml</u> |
| Storage_stability : | <u>-20°C/1 year</u> |
| Msds : | <u>MSDS_Antibody.pdf</u> |
| Other_name : | <u>ZC3H11A; KIAA0663; ZC3HDC11A; Zinc finger CCCH domain-containing protein 11A</u> |
| Molecular Weight : | <u>85KD</u> |

Product Images



Western Blot analysis of various cells using ZC3H11A Polyclonal Antibody diluted at 1 : 1000. Secondary antibody was diluted at 1:20000