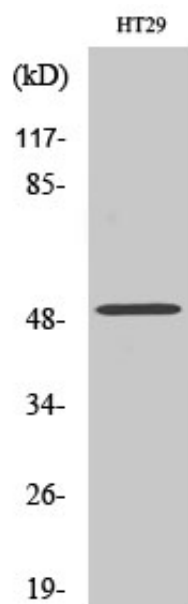




ZFYVE19 Polyclonal Antibody

Catalog_no :	AT4942
Applications :	WB,IHC-p,ELISA
Reactivity :	Human
Category :	抗原抗体
Size :	100µg/50µg/20µg
Gene_name :	ZFYVE19
Protein_name :	Zinc finger FYVE domain-containing protein 19
Humangene_id :	84936
Humanswissprot_no :	Q96K21
Immunogen :	The antiserum was produced against synthesized peptide derived from human ZFYVE19. AA range:311-360
Specificity :	ZFYVE19 Polyclonal Antibody detects endogenous levels of ZFYVE19 protein.
Formulation :	Liquid in PBS containing 50% glycerol, 0.5% BSA and 0.02% sodium azide.
Source :	Rabbit
Dilution :	Western Blot: 1/500 - 1/2000. Immunohistochemistry: 1/100 - 1/300. ELISA: 1/40000. Not yet tested in other applications.
Purification :	The antibody was affinity-purified from rabbit antiserum by affinity-chromatography using epitope-specific immunogen.
Concentration :	1 mg/ml
Storage_stability :	-20°C/1 year
Msds :	MSDS_Antibody.pdf
Other_name :	ZFYVE19; MPFYVE; Zinc finger FYVE domain-containing protein 19; MLL partner containing FYVE domain
Molecular Weight :	50KD

Product Images



Western Blot analysis of various cells using ZFYVE19 Polyclonal Antibody. Secondary antibody was diluted at 1:20000