



ZIP7 Polyclonal Antibody

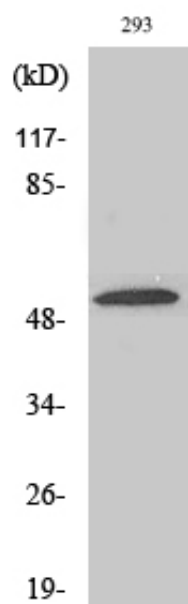
Catalog_no :	AT4950
Applications :	WB,ELISA
Reactivity :	Human,Mouse,Rat
Category :	抗原抗体
Size :	100µg/50µg/20µg
Gene_name :	SLC39A7
Protein_name :	Zinc transporter SLC39A7
Humangene_id :	7922
Humanswissprot_no :	Q92504
Mousegene_id :	14977
Mouseswissprot_no :	Q31125
Immunogen :	The antiserum was produced against synthesized peptide derived from human SLC39A7. AA range:131-180
Specificity :	ZIP7 Polyclonal Antibody detects endogenous levels of ZIP7 protein.
Formulation :	Liquid in PBS containing 50% glycerol, 0.5% BSA and 0.02% sodium azide.
Source :	Rabbit
Dilution :	Western Blot: 1/500 - 1/2000. ELISA: 1/5000. Not yet tested in other applications.
Purification :	The antibody was affinity-purified from rabbit antiserum by affinity-chromatography using epitope-specific immunogen.
Concentration :	1 mg/ml
Storage_stability :	-20°C/1 year
Msds :	MSDS_Antibody.pdf
Other_name :	SLC39A7; HKE4; RING5; Zinc transporter SLC39A7; Histidine-rich membrane protein Ke4; Really interesting new gene 5 protein; Solute carrier family 39 member 7
Molecular Weight :	50KD



专注二抗产品

Biodragon旗下品牌

Product Images



Western Blot analysis of various cells using ZIP7 Polyclonal Antibody. Secondary antibody was diluted at 1:20000