

ZIS Polyclonal Antibody

Catalog_no :	AT4952
Applications :	WB,IHC-p,IF,ELISA
Reactivity :	Human,Mouse,Rat
Category :	抗原抗体
Size :	100µg/50µg/20µg
Gene_name :	ZRANB2
Protein_name :	Zinc finger Ran-binding domain-containing protein 2
Humangene_id	9406
:	
Humanswissprot	O95218
_no :	
Mousegene_id :	53861
Mouseswissprot	Q9R020
_no :	
Ratgene_id :	58821
Ratswissprot_no	O35986
:	
Immunogen :	The antiserum was produced against synthesized peptide derived from human ZNF265. AA range:106-155
Specificity :	ZIS Polyclonal Antibody detects endogenous levels of ZIS protein.
Formulation :	Liquid in PBS containing 50% glycerol, 0.5% BSA and 0.02% sodium azide.
Source :	Rabbit
Dilution :	Western Blot: 1/500 - 1/2000. Immunohistochemistry: 1/100 - 1/300. Immunofluorescence: 1/200 - 1/1000. ELISA: 1/10000. Not yet tested in other applications.
Purification :	The antibody was affinity-purified from rabbit antiserum by affinity-chromatography using epitope-specific immunogen.
Concentration :	1 mg/ml
Storage_stability	-20°C/1 year
:	

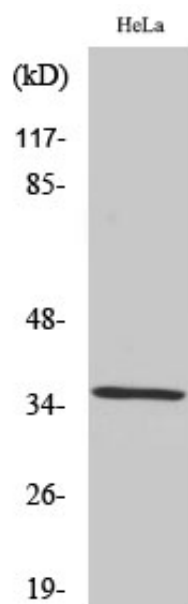


MsdS : MSDS_Antibody.pdf

Other_name : ZRANB2; ZIS; ZNF265; Zinc finger Ran-binding domain-containing protein 2; Zinc finger protein 265; Zinc finger; splicing

Molecular Weight : 34KD

Product Images



Western Blot analysis of various cells using ZIS Polyclonal Antibody. Secondary antibody was diluted at 1:20000 cells nucleus extracted by Minute TM Cytoplasmic and Nuclear Fractionation kit (SC-003, Invent biotech, MN, USA).