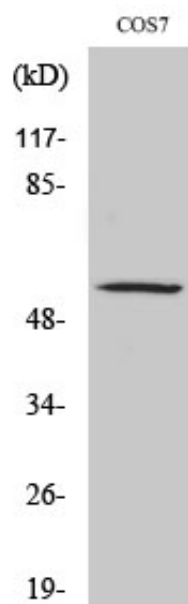


## ZNF498 Polyclonal Antibody

Catalog_no :	AT4970
Applications :	WB,ELISA
Reactivity :	Human,Monkey
Category :	抗原抗体
Size :	100µg/50µg/20µg
Gene_name :	ZNF498
Protein_name :	Zinc finger protein 498
Humangene_id :	<a href="#">221785</a>
Humanswissprot_no :	<a href="#">Q6NSZ9</a>
Immunogen :	The antiserum was produced against synthesized peptide derived from human ZNF498. AA range:331-380
Specificity :	ZNF498 Polyclonal Antibody detects endogenous levels of ZNF498 protein.
Formulation :	Liquid in PBS containing 50% glycerol, 0.5% BSA and 0.02% sodium azide.
Source :	Rabbit
Dilution :	Western Blot: 1/500 - 1/2000. ELISA: 1/40000. Not yet tested in other applications.
Purification :	The antibody was affinity-purified from rabbit antiserum by affinity-chromatography using epitope-specific immunogen.
Concentration :	1 mg/ml
Storage_stability :	-20°C/1 year
Msds :	MSDS_Antibody.pdf
Other_name :	ZNF498; ZSCAN25; Zinc finger protein 498; Zinc finger and SCAN domain-containing protein 25
Molecular Weight :	30KD

## Product Images



Western Blot analysis of various cells using ZNF498 Polyclonal Antibody. Secondary antibody was diluted at 1:20000 cells nucleus extracted by Minute TM Cytoplasmic and Nuclear Fractionation kit (SC-003, Invent biotech, MN, USA).