



## ZNF608 Polyclonal Antibody

Catalog_no :	AT4976
Applications :	WB,IHC-p,ELISA
Reactivity :	Human,Mouse
Category :	抗原抗体
Size :	100µg/50µg/20µg
Gene_name :	ZNF608
Protein_name :	Zinc finger protein 608
Humangene_id :	<a href="#">57507</a>
Humanswissprot_no :	<a href="#">Q9ULD9</a>
Mousegene_id :	<a href="#">269023</a>
Mouseswissprot_no :	<a href="#">Q56A10</a>
Immunogen :	The antiserum was produced against synthesized peptide derived from human ZNF608. AA range:1231-1280
Specificity :	ZNF608 Polyclonal Antibody detects endogenous levels of ZNF608 protein.
Formulation :	Liquid in PBS containing 50% glycerol, 0.5% BSA and 0.02% sodium azide.
Source :	Rabbit
Dilution :	Western Blot: 1/500 - 1/2000. Immunohistochemistry: 1/100 - 1/300. ELISA: 1/5000. Not yet tested in other applications.
Purification :	The antibody was affinity-purified from rabbit antiserum by affinity-chromatography using epitope-specific immunogen.
Concentration :	1 mg/ml
Storage_stability :	-20°C/1 year
Msds :	<a href="#">MSDS_Antibody.pdf</a>
Other_name :	ZNF608; KIAA1281; Zinc finger protein 608; Renal carcinoma antigen NY-REN-36
Molecular Weight :	160KD

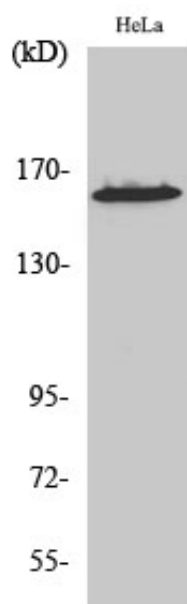


**专注二抗产品**

Biodragon旗下品牌

---

## Product Images



Western Blot analysis of various cells using ZNF608 Polyclonal Antibody diluted at 1 : 500. Secondary antibody was diluted at 1:20000