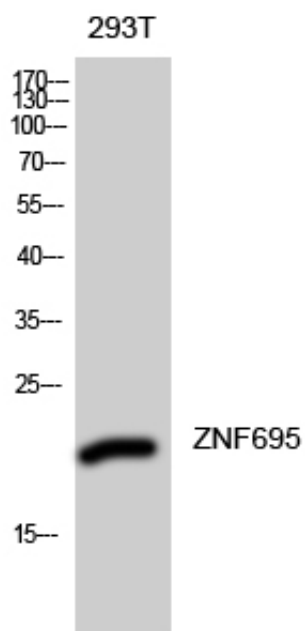




## ZNF695 Polyclonal Antibody

Catalog_no :	AT4980
Applications :	WB,ELISA
Reactivity :	Human
Category :	抗原抗体
Size :	100µg/50µg/20µg
Gene_name :	ZNF695
Protein_name :	Zinc finger protein 695
Humangene_id :	<a href="#">57116</a>
Humanswissprot_no :	<a href="#">Q8IW36</a>
Immunogen :	Synthesized peptide derived from the Internal region of human ZNF695.
Specificity :	ZNF695 Polyclonal Antibody detects endogenous levels of ZNF695 protein.
Formulation :	Liquid in PBS containing 50% glycerol, 0.5% BSA and 0.02% sodium azide.
Source :	Rabbit
Dilution :	Western Blot: 1/500 - 1/2000. ELISA: 1/10000. Not yet tested in other applications.
Purification :	The antibody was affinity-purified from rabbit antiserum by affinity-chromatography using epitope-specific immunogen.
Concentration :	1 mg/ml
Storage_stability :	-20°C/1 year
Msds :	<a href="#">MSDS_Antibody.pdf</a>
Other_name :	ZNF695; Zinc finger protein 695; Zinc finger protein SBZF3
Molecular Weight :	20KD

## Product Images



Western Blot analysis of 293T cells using ZNF695 Polyclonal Antibody diluted at 1 : 2000. Secondary antibody was diluted at 1:20000 cells nucleus extracted by Minute TM Cytoplasmic and Nuclear Fractionation kit (SC-003, Inventbiotech, MN, USA).