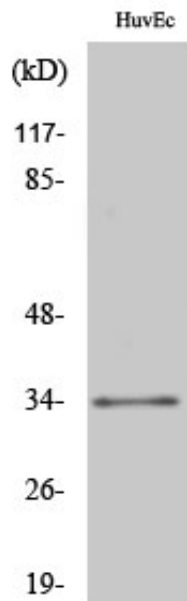


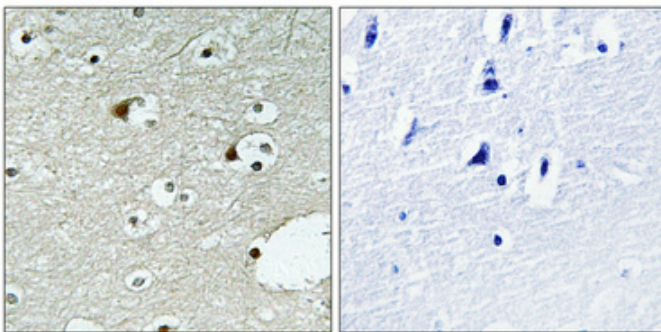
## ZNF75 Polyclonal Antibody

|                     |  |
|---------------------|--|
| Catalog_no :        | AT4981   |
| Applications :      | WB,IHC-p,ELISA   |
| Reactivity :        | Human  |
| Category :          | 抗原抗体   |
| Size :              | 100µg/50µg/20µg  |
| Gene_name :         | ZNF75D   |
| Protein_name :      | Zinc finger protein 75D  |
| Humangene_id :      | <a href="#">7626</a>   |
| Humanswissprot_no : | <a href="#">P51815</a>   |
| Immunogen :         | The antiserum was produced against synthesized peptide derived from human ZNF75. AA range:296-345                        |
| Specificity :       | ZNF75 Polyclonal Antibody detects endogenous levels of ZNF75 protein.  |
| Formulation :       | Liquid in PBS containing 50% glycerol, 0.5% BSA and 0.02% sodium azide.  |
| Source :            | Rabbit   |
| Dilution :          | Western Blot: 1/500 - 1/2000. Immunohistochemistry: 1/100 - 1/300. ELISA: 1/10000. Not yet tested in other applications. |
| Purification :      | The antibody was affinity-purified from rabbit antiserum by affinity-chromatography using epitope-specific immunogen.    |
| Concentration :     | 1 mg/ml  |
| Storage_stability : | -20°C/1 year   |
| Msds :              | MSDS_Antibody.pdf  |
| Other_name :        | ZNF75D; ZNF75; ZNF82; Zinc finger protein 75D; Zinc finger protein 75; Zinc finger protein 82                            |
| Molecular Weight :  | 40KD   |

## Product Images



Western Blot analysis of various cells using ZNF75 Polyclonal Antibody diluted at 1 : 500. Secondary antibody was diluted at 1:20000



Immunohistochemical analysis of paraffin-embedded Human brain. Antibody was diluted at 1:100(4°,overnight). High-pressure and temperature Tris-EDTA,pH8.0 was used for antigen retrieval. Negative contrl (right) obtained from antibody was pre-absorbed by immunogen peptide.