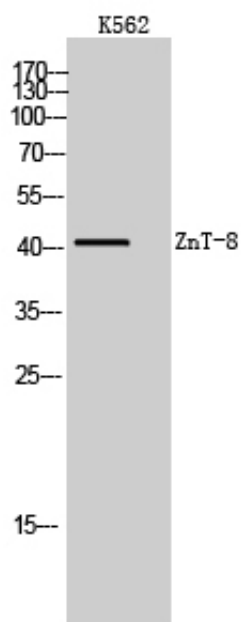




ZnT-8 Polyclonal Antibody

Catalog_no :	AT4990
Applications :	WB,ELISA
Reactivity :	Human
Category :	抗原抗体
Size :	100µg/50µg/20µg
Gene_name :	SLC30A8
Protein_name :	Zinc transporter 8
Humangene_id :	169026
Humanswissprot_no :	Q8IWU4
Immunogen :	The antiserum was produced against synthesized peptide derived from human SLC30A8. AA range:171-220
Specificity :	ZnT-8 Polyclonal Antibody detects endogenous levels of ZnT-8 protein.
Formulation :	Liquid in PBS containing 50% glycerol, 0.5% BSA and 0.02% sodium azide.
Source :	Rabbit
Dilution :	Western Blot: 1/500 - 1/2000. ELISA: 1/10000. Not yet tested in other applications.
Purification :	The antibody was affinity-purified from rabbit antiserum by affinity-chromatography using epitope-specific immunogen.
Concentration :	1 mg/ml
Storage_stability :	-20°C/1 year
Msds :	MSDS_Antibody.pdf
Other_name :	SLC30A8; ZNT8; Zinc transporter 8; ZnT-8; Solute carrier family 30 member 8
Molecular Weight :	41KD

Product Images



Western Blot analysis of K562 cells using ZnT-8 Polyclonal Antibody. Secondary antibody was diluted at 1:20000