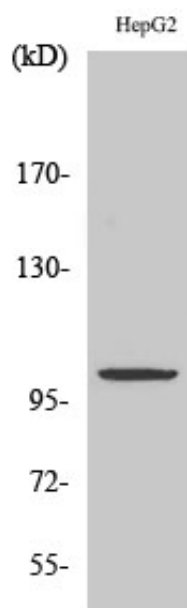




ZZZ3 Polyclonal Antibody

Catalog_no :	AT4999
Applications :	WB,ELISA
Reactivity :	Human,Mouse,Rat
Category :	抗原抗体
Size :	100µg/50µg/20µg
Gene_name :	ZZZ3
Protein_name :	ZZ-type zinc finger-containing protein 3
Humangene_id :	26009
Humanswissprot_no :	Q8IYH5
Mousegene_id :	108946
Mouseswissprot_no :	Q6KAQ7
Immunogen :	The antiserum was produced against synthesized peptide derived from human ZZZ3. AA range:341-390
Specificity :	ZZZ3 Polyclonal Antibody detects endogenous levels of ZZZ3 protein.
Formulation :	Liquid in PBS containing 50% glycerol, 0.5% BSA and 0.02% sodium azide.
Source :	Rabbit
Dilution :	Western Blot: 1/500 - 1/2000. ELISA: 1/5000. Not yet tested in other applications.
Purification :	The antibody was affinity-purified from rabbit antiserum by affinity-chromatography using epitope-specific immunogen.
Concentration :	1 mg/ml
Storage_stability :	-20°C/1 year
Msds :	MSDS_Antibody.pdf
Other_name :	ZZZ3; ZZ-type zinc finger-containing protein 3
Molecular Weight :	102KD

Product Images



Western Blot analysis of various cells using ZZZ3 Polyclonal Antibody. Secondary antibody was diluted at 1:20000 cells nucleus extracted by Minute TM Cytoplasmic and Nuclear Fractionation kit (SC-003, Invent biotech, MN, USA).