

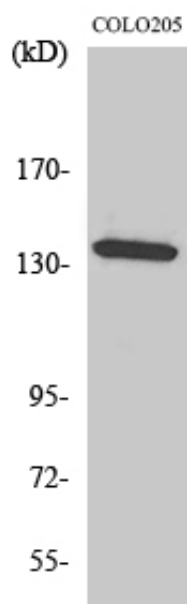
α-protein Kinase 1 Polyclonal Antibody

Catalog_no :	AT5001
Applications :	WB,IHC-p,IF,ELISA
Reactivity :	Human,Mouse
Category :	抗原抗体
Size :	100μg/50μg/20μg
Gene_name :	ALPK1
Protein_name :	Alpha-protein kinase 1
Humangene_id :	80216
Humanswissprot_no :	Q96QP1
Mouseswissprot_no :	Q9CXB8
Immunogen :	The antiserum was produced against synthesized peptide derived from human ALPK1. AA range:11-60
Specificity :	α-protein Kinase 1 Polyclonal Antibody detects endogenous levels of α-protein Kinase 1 protein.
Formulation :	Liquid in PBS containing 50% glycerol, 0.5% BSA and 0.02% sodium azide.
Source :	Rabbit
Dilution :	Western Blot: 1/500 - 1/2000. Immunohistochemistry: 1/100 - 1/300. Immunofluorescence: 1/200 - 1/1000. ELISA: 1/20000. Not yet tested in other applications.
Purification :	The antibody was affinity-purified from rabbit antiserum by affinity-chromatography using epitope-specific immunogen.
Concentration :	1 mg/ml
Storage_stability :	-20°C/1 year
Msds :	MSDS_Antibody.pdf
Other_name :	ALPK1; KIAA1527; LAK; Alpha-protein kinase 1; Chromosome 4 kinase; Lymphocyte alpha-protein kinase
Molecular	139KD



Weight :

Product Images



Western Blot analysis of various cells using α -protein Kinase 1 Polyclonal Antibody. Secondary antibody was diluted at 1:20000