

β-1,3-Gal-T1 Polyclonal Antibody

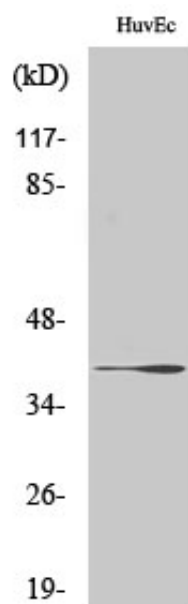
Catalog_no :	AT5002
Applications :	WB,ELISA
Reactivity :	Human,Mouse
Category :	抗原抗体
Size :	100μg/50μg/20μg
Gene_name :	B3GALT1
Protein_name :	Beta-1,3-galactosyltransferase 1
Humangene_id :	8708
Humanswissprot_no :	Q9Y5Z6
Mousegene_id :	26877
Mouseswissprot_no :	O54904
Immunogen :	The antiserum was produced against synthesized peptide derived from human B3GALT1. AA range:61-110
Specificity :	β-1,3-Gal-T1 Polyclonal Antibody detects endogenous levels of β-1,3-Gal-T1 protein.
Formulation :	Liquid in PBS containing 50% glycerol, 0.5% BSA and 0.02% sodium azide.
Source :	Rabbit
Dilution :	Western Blot: 1/500 - 1/2000. ELISA: 1/20000. Not yet tested in other applications.
Purification :	The antibody was affinity-purified from rabbit antiserum by affinity-chromatography using epitope-specific immunogen.
Concentration :	1 mg/ml
Storage_stability :	-20°C/1 year
Msds :	MSDS_Antibody.pdf
Other_name :	B3GALT1; Beta-1; 3-galactosyltransferase 1; Beta-1,3-GalTase 1; Beta3Gal-T1; Beta3GalT1; UDP-galactose:beta-N-acetyl-glucosamine-beta-1,3-galactosyltransferase 1
Molecular Weight :	36KD



专注二抗产品

Biodragon旗下品牌

Product Images



Western Blot analysis of various cells using β -1,3-Gal-T1 Polyclonal Antibody. Secondary antibody was diluted at 1:20000