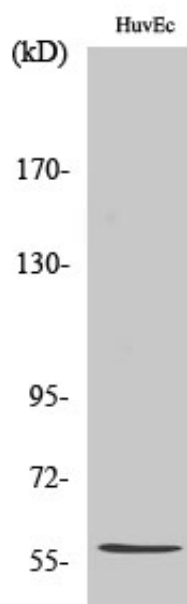


β-1,3-Gal-TL Polyclonal Antibody

Catalog_no :	AT5005
Applications :	WB,IHC-p,ELISA
Reactivity :	Human
Category :	抗原抗体
Size :	100μg/50μg/20μg
Gene_name :	B3GALTL
Protein_name :	Beta-1,3-galucosyltransferase
Humangene_id :	145173
Humanswissprot_no :	Q6Y288
Immunogen :	The antiserum was produced against synthesized peptide derived from human B3GALTL. AA range:449-498
Specificity :	β-1,3-Gal-TL Polyclonal Antibody detects endogenous levels of β-1,3-Gal-TL protein.
Formulation :	Liquid in PBS containing 50% glycerol, 0.5% BSA and 0.02% sodium azide.
Source :	Rabbit
Dilution :	Western Blot: 1/500 - 1/2000. Immunohistochemistry: 1/100 - 1/300. ELISA: 1/40000. Not yet tested in other applications.
Purification :	The antibody was affinity-purified from rabbit antiserum by affinity-chromatography using epitope-specific immunogen.
Concentration :	1 mg/ml
Storage_stability :	-20°C/1 year
Msds :	MSDS_Antibody.pdf
Other_name :	B3GALTL; B3GTL; Beta-1; 3-galucosyltransferase; Beta3Glc-T; Beta-3-glycosyltransferase-like
Molecular Weight :	57KD

Product Images



Western Blot analysis of various cells using β -1,3-Gal-TL Polyclonal Antibody diluted at 1 : 500. Secondary antibody was diluted at 1:20000