

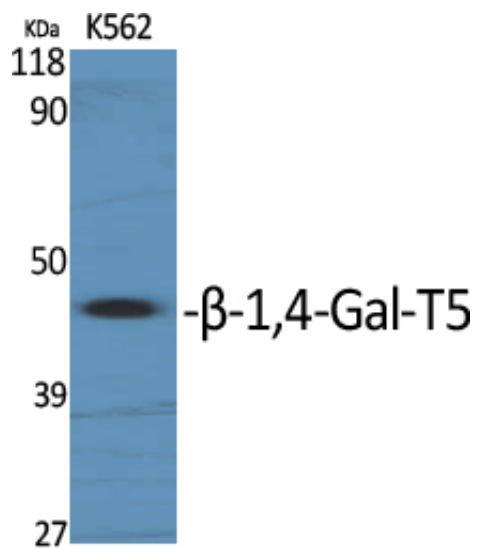
β-1,4-Gal-T5 Polyclonal Antibody

Catalog_no :	AT5010
Applications :	WB,ELISA
Reactivity :	Human,Mouse
Category :	抗原抗体
Size :	100μg/50μg/20μg
Gene_name :	B4GALT5
Protein_name :	Beta-1,4-galactosyltransferase 5
Humangene_id :	9334
Humanswissprot_no :	O43286
Mousegene_id :	56336
Mouseswissprot_no :	Q9JMK0
Immunogen :	The antiserum was produced against synthesized peptide derived from human B4GALT5. AA range:321-370
Specificity :	β-1,4-Gal-T5 Polyclonal Antibody detects endogenous levels of β-1,4-Gal-T5 protein.
Formulation :	Liquid in PBS containing 50% glycerol, 0.5% BSA and 0.02% sodium azide.
Source :	Rabbit
Dilution :	Western Blot: 1/500 - 1/2000. ELISA: 1/10000. Not yet tested in other applications.
Purification :	The antibody was affinity-purified from rabbit antiserum by affinity-chromatography using epitope-specific immunogen.
Concentration :	1 mg/ml
Storage_stability :	-20°C/1 year
Msds :	MSDS_Antibody.pdf
Other_name :	B4GALT5; Beta-1; 4-galactosyltransferase 5; Beta-1,4-GalTase 5; Beta4Gal-T5; b4Gal-T5; Beta-1,4-GalT II; UDP-Gal:beta-GlcNAc beta-1,4-galactosyltransferase 5; UDP-galactose:beta-N-acetylglucosamine beta-1,4-galactosyltransferase 5
Molecular	40KD

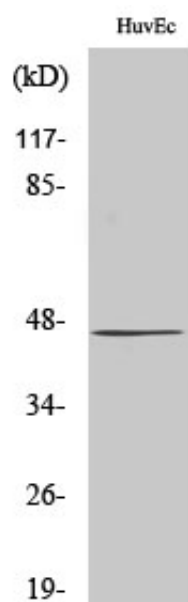


Weight :

Product Images



Western Blot analysis of various cells using β -1,4-Gal-T5 Polyclonal Antibody diluted at 1 : 1000. Secondary antibody was diluted at 1:20000



Western Blot analysis of 293 cells using β -1,4-Gal-T5 Polyclonal Antibody diluted at 1 : 1000. Secondary antibody was diluted at 1:20000