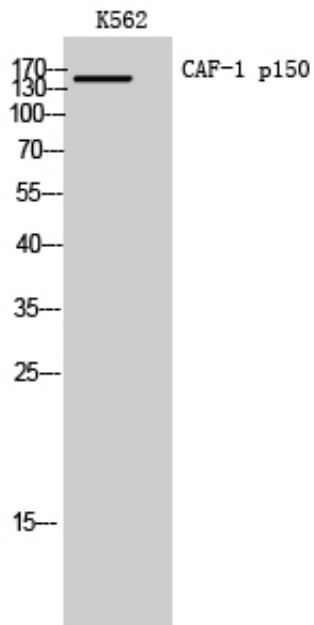




CAF-1 p150 Polyclonal Antibody

Catalog_no :	<u>AT5017</u>
Applications :	<u>WB,ELISA</u>
Reactivity :	<u>Human,Mouse</u>
Category :	<u>抗原抗体</u>
Size :	<u>100µg/50µg/20µg</u>
Gene_name :	<u>CHAF1A</u>
Protein_name :	<u>Chromatin assembly factor 1 subunit A</u>
Humangene_id :	<u>10036</u>
Humanswissprot_no :	<u>Q13111</u>
Mousegene_id :	<u>27221</u>
Mouseswissprot_no :	<u>Q9QWF0</u>
Immunogen :	<u>Synthesized peptide derived from CAF-1 p150 . at AA range: 300-380</u>
Specificity :	<u>CAF-1 p150 Polyclonal Antibody detects endogenous levels of CAF-1 p150 protein.</u>
Formulation :	<u>Liquid in PBS containing 50% glycerol, 0.5% BSA and 0.02% sodium azide.</u>
Source :	<u>Rabbit</u>
Dilution :	<u>Western Blot: 1/500 - 1/2000. ELISA: 1/10000. Not yet tested in other applications.</u>
Purification :	<u>The antibody was affinity-purified from rabbit antiserum by affinity-chromatography using epitope-specific immunogen.</u>
Concentration :	<u>1 mg/ml</u>
Storage_stability :	<u>-20°C/1 year</u>
Msds :	<u>MSDS_Antibody.pdf</u>
Other_name :	<u>CHAF1A; CAF; CAF1P150; Chromatin assembly factor 1 subunit A; CAF-1 subunit A; Chromatin assembly factor I p150 subunit; CAF-I 150 kDa subunit; CAF-I p150; hp150</u>
Molecular Weight :	<u>150KD</u>

Product Images



Western Blot analysis of K562 cells using CAF-1 p150 Polyclonal Antibody. Secondary antibody was diluted at 1:20000 cells nucleus extracted by Minute TM Cytoplasmic and Nuclear Fractionation kit (SC-003, Invent biotech, MN, USA).